

# DKS

شركة دار الكون السعودي

DAR AL KAWN AL SAUDI

**ABOUT DKS**

**CONSTRUCTION AND CONTRACTING PROJECTS**

**ELECTROMECHANIC, MEDICAL, INDUSTRIAL GAS Systems**

**THE Wood and Steel Work**

**THE Refrigeration System**

**DECORATION AND INTERIOR DESIGN**

**MEDICAL SUPPLY AND SERVICES**

**MODULAR OPERATING THEATRES**

**RADIATION PROTECTION SYSTEM**

**GLASS, BULLET RESISTANT & LEAD GLASS**

DKS Company was established in 1997 and headquartered in Riyadh city. It was started its activities in general trading and medical equipment. After realizing its fame and popularity through its implementation of several medical and commercial projects, and gaining the trust of its customers, the company has developed its activities to meet the requirements of the local and international markets. In 2002, it added the Radiation Protection Department, which was markedly distinguished by all government and private sectors and obtained certificate from the Projects Department of the Ministry of Health. In addition, it was accredited to all government and private sector projects. In 2004, DKS added electromechanical works (which include air conditioning, medical gases and cold storage rooms), which were classified by the Ministry of Municipal and Rural Affairs. In 2010, wood and metal works were added as an activity supporting the projects requirements.

The company has a group of highly qualified engineers and technicians to supervise the implementation of projects, as well as a range of logistics services that have an active role in supporting the work.

The company has always been keen to keep abreast of the global development in all the fields in which it has specialized. It has a distinguished balance of the largest clients in the Kingdom of Saudi Arabia and the Middle East, carried out projects inside and outside the Kingdom in all its activities with the largest and most important customers in the Kingdom.



## OUR VISION:

We strive to support our customers and help them achieve their goals by providing them with the best solutions, and developing our business for the best by keeping up with the best of technology in our field.

شركة دار الكون السعودي تأسست عام ١٩٩٧ م ومقرها الرئيسي مدينة الرياض، بدأت نشاطها بالتجارة العامة والتجهيزات الطبية، وبعد تحقيق شهرة وشعبية واسعة من خلال تنفيذها لعدة مشاريع في المجال الطبي والتجاري و كسب ثقة عملائها إتجهت الشركة الى تطوير نشاطاتها ومواكبة متطلبات السوق المحلي والعالمي، حيث أضافت في عام ٢٠٠٢ قسم الحماية من الاشعاع والتي تميزت فيه بشكل ملحوظ لدى جميع القطاعات الحكومية والخاصة وحصولها على تاهيل من قسم المشاريع بوزارة الصحة بالاضافة الى اعتمادها لدى جميع مشاريع القطاعات الحكومية والخاصة، وفي عام ٢٠٠٤ تم إضافة قسم المقاولات العامة والاعمال الالكتروميكانيكية (التي تشمل أعمال التكييف والغازات وغرف التبريد) حيث تم تصنيفها من قبل وزارة الشؤون البلدية والقروية، وفي عام ٢٠١٠ م تم إضافة الاعمال الخشبية والحديدية كنشاط داعم لمتطلبات المشاريع. لدى الشركة مجموعة من المهندسين والفنيين ذو كفاءة عالية للإشراف على تنفيذ المشاريع، بالاضافة على مجموعة من الخدمات اللوجستية والتي لها دور فعال في مساندة العمل.

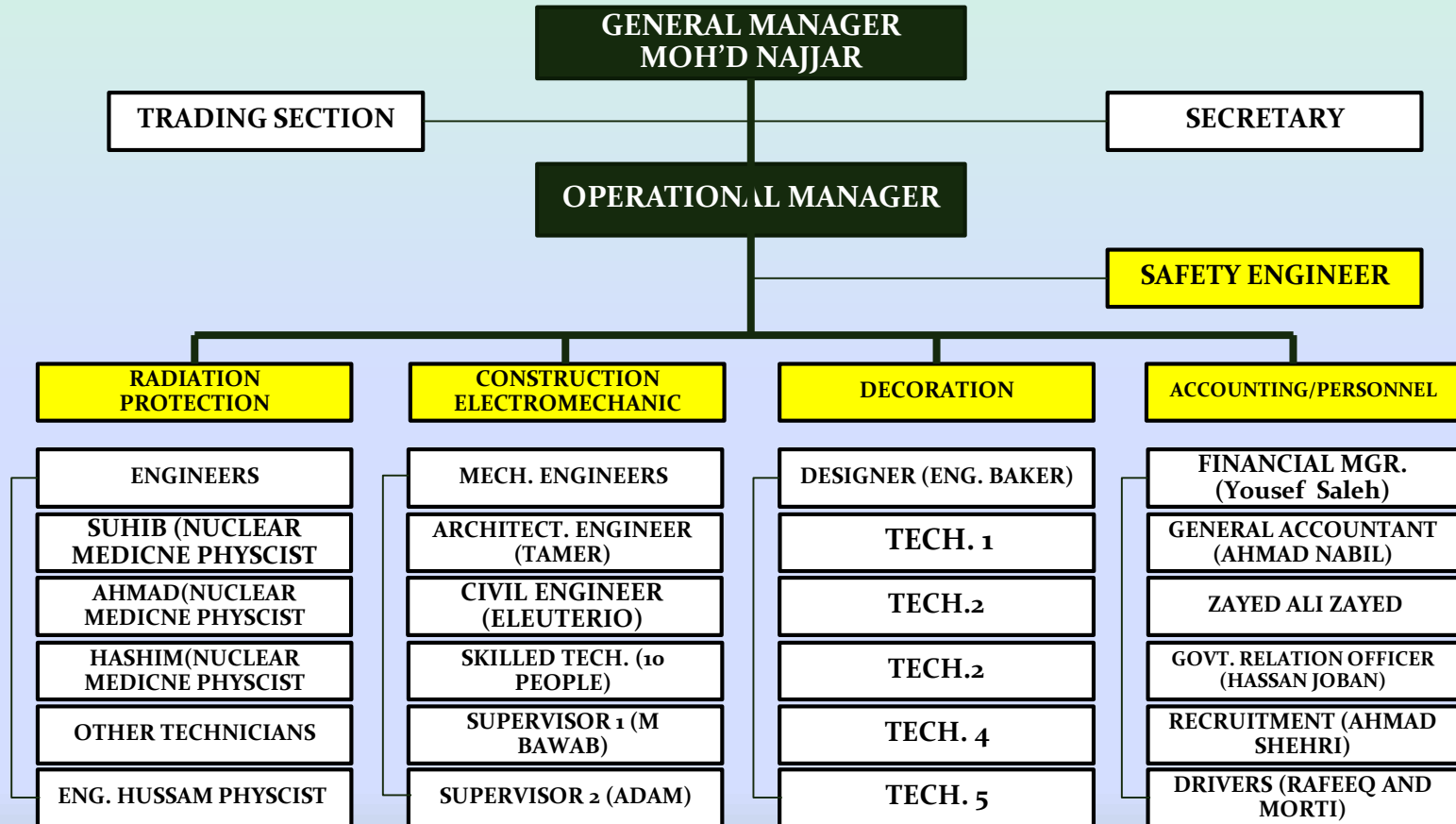
حرصت الشركة دائماً على مواكبة التطور العالمي في جميع المجالات التي تخصصت فيها، لها رصيد مميز من أكبر العملاء في المملكة العربية السعودية والشرق الاوسط، نفذت مشاريع داخل وخارج المملكة في جميع أنشطتها لدى أكبر وأهم عملاء في المملكة.



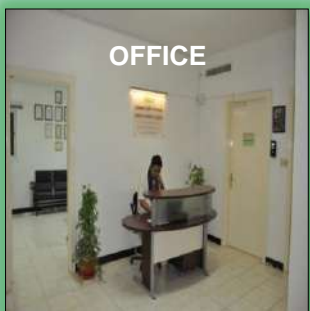
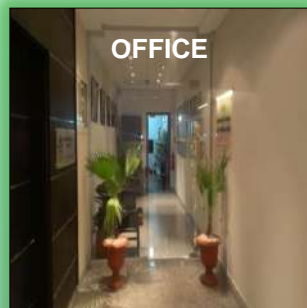
## رؤيتنا :

نحن نسعى جاهدين من خلال تنفيذ مشاريعنا بأفضل الحلول لتتوافق مع احتياجات عملائنا من خلال مواكبة أفضل ما تقدمه التكنولوجيا في مجال عملنا .

# ORGANIZATIONAL STRUCTURE



## DKS OFFICES AND DIVISIONS





## WORKSHOPS AND TECHNICAL TEAMS



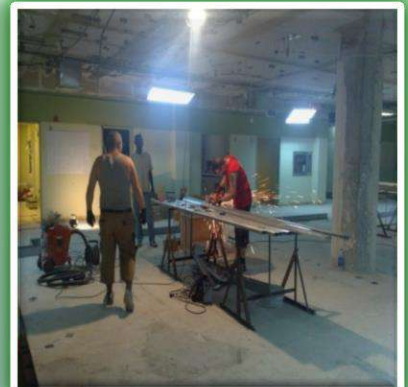


# WORKSHOPS AND TECHNICAL TEAMS





## STEEL FABRICATION WORKSHOP





## STEEL FABRICATION WORKSHOP





## VEHICLES AND LOGESTIC SUPPORT



## CONSTRUCTION AND CONTRACTING





## CONSTRUCTION AND CONTRACTING

Renovation of buildings and health care centers includes all necessary work such as demolition, build up, painting, vinyl installation, tiles, ceramic, electrical, plumbing, complete finishing and others



**DKS** has been established as part of its administrative structure, a department for cooperation and coordination among various engineering specializations, suppliers and contractors, from the very beginning until culmination by project turn key hand-over.

Hence our firm relations with dealers and customers have been established, through definition and clarification of responsibilities, prior to commencement of any project allocated to us, the thing which provides a suitable chance to use this cooperation in a way providing for sufficiency and activation, regarding cost and time saving, as well as quality of executed works.

## CONSTRUCTION AND RENOVATION

Renovation of buildings and health care centers includes all necessary work such as demolition, build up, painting, vinyl installation, tiles, ceramic, electrical, plumbing, complete finishing and others

Pre installation for medical and non medical equipment: such as MRI, CT, X-RAY and others industrial equipment.





# DKS

شركة دار الكون السعودي

DAR AL KAWN AL SAUDI

**E**LECTROMECHANIC, **M**EDICAL, **I**NDUSTRIAL **G**AS & **L**PG **S**ystems

قسم أعمال المالكتروميكانيك و الغازات الطبية والغير طبية

## ELECTROMECHANICAL – Plumbing and WATER TREATMENT

**DKS** is among the Electromechanical Company in Saudi Arabia with a enormous resources of expertise and experience, providing a complete range of Engineering and Electromechanical Services. We are acknowledge and leading company in the application of new systems. Having started relatively small but with the farsightedness of the owners and able management, has steadily grown in resources and experience, as well as its share of market in the Service sector of the economy. Our Clients represents all sectors of the Saudi Economy.

**DKS** has gained extensive experience in the provision of Facility Engineering and, Safety and Security with Emphasis on Accident Prevention. In every undertaking or contractual commitment, as consistently drawn upon its existing/available resources/organization in order to ensure experience and capable personnel's are immediately available to start-up/mobilized any Contract, whether for the Government or the Private sector. As such, has won praise and admiration from its Clients with the speed and efficiency of the Project start-up. Furthermore,



# ELECTROMECHANICAL AND FIRE SYSTEM



# MEDICAL, INDUSTRIAL GAS AND LPG

## Our Company:

**DKS MEDICAL** based in Riyadh. Specialized in Medical Gas Piped System for hospitals, clinics, research centers, laboratories, dental centers and Hospital Equipment & Engineering.

**DKS MEDICAL** is backed-up by its supplier that invested heavily dealing in many advance technology and competitive systems for MGP's & healthcare industry.

**DKS MEDICAL** can provide you better services in complete design, supply, installation & management services for turnkey project like, Medical Gas Pipeline System, Industrial and Medical Air Compressor System, Industrial and Medical Vacuum System, Oxygen Generators, Medical Architectural Products (Bed head unit, Articulating single and dual arm Pendants).

## Our Mission :

To provide the best possible hospital, dental and laboratory facility using professional and practical approach in every project design, supply and installation.

## Mission Statement :

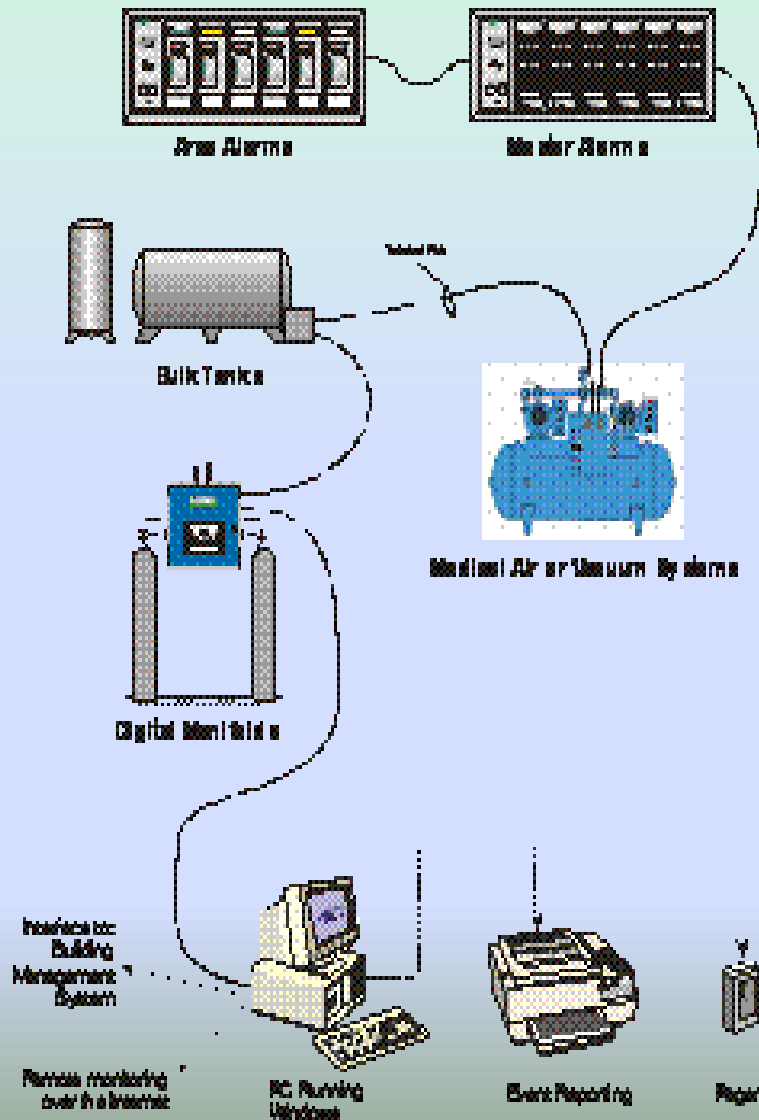
We do the right connection.





# MEDICAL AND INDUSTRIAL GAS Systems

Supply, Installation, Testing & Commissioning of :



Medical Gas System.



Dental & Laboratory Gas System.



Architectural Products.



Medical Air & Vacuum System.



Cryogenic Storage Tank & Vaporizers.



Testing & Commissioning.

# MEDICAL AND INDUSTRIAL GAS Piping

**LAWTON**  
MEDICAL

## UK PRODUCTS



### MEDICAL TUBES

Pipeline solutions for medical installations. Degreased copper tubes to BS EN 13348 and **kite marked** as specified in the latest NHS Spec HTM02 which replaces HTM2022.

Specifically designed for copper medical gas and vacuum systems.

Superseding earlier 'hybridised' copper tube standards such as BS EN 1057 & BS 2871 Part 1 Table X quoted in HTM 2022 & NHS engineering spec. C11 Specific Benefits Include:

- Tighter limits on **cleanliness** determination.
- Improved identification to avoid confusion with similar sizes of water service tube.
- Lawton Tubes are the first British company to be awarded the kitemark license to supply to this standard, now covers copper tubes up to and including 108mm.



### MEDICAL GAS

#### CLEANED TO THE REQUIREMENTS OF BS EN 13348 AND HTM 02-01

Yorkshire Medical Gas Tubes are specially cleaned and packed to ensure they are suitable for medical gases and/or vacuum lines. In oxygen lines, spontaneous combustion can take place with any greases or hydrocarbon in the tube, and the cleaning process eliminates this risk. Additionally, the cleaning takes away malodours from any residual lubricants that may taint breathable gases.

#### DESIGN, INSTALLATION AND USE

All products should be designed, installed and used in accordance with appropriate specifications or codes of practice (e.g. HTM 02-01) and / or Yorkshire Copper Tube technical recommendations

Note \*\* BS EN 13348 only defines requirements for copper tubes in the range 12-54mm

#### TYPICAL APPLICATION

- Medical gas lines
- Oxygen lines
- Vacuum lines

#### STANDARD FEATURES

- Cu-DHP grade copper
- BSi Kitemark licensed
- 25 year guarantee against product failure directly attributable to a manufacturing defect
- Sizes up to and including 54mm are manufactured in accordance with BS EN 13348
- Size above 54mm are manufactured to the physical and dimensional requirements of BS EN 1057, cleaned to the requirements of BS EN 13348\*\*
- Available in 5.8m or 6m lengths in diameters 12-108mm
- Half hard tubes are suitable for cold bending and forming



# Our Partners



AMICO -Corporation  
Richmond Hill, Ontario, CANADA  
Complying NFPA 99 (USA) & CSA Z305 (Canadian)  
MODA & MOH APPROVED



CMS- Connect Medical System  
Fieldhouse Industrial Estate, Rochdale, U.K.  
Complying to HTM 2022/EN/BS Standards.  
MODA , MOH & MOI APPROVED



ONDAL Industrietechnik GmbH  
Wellastrabe 2-4, 36085 Hunfeld , GERMANY  
Articulating pendant (Dual & Single Arm or with  
motorized arm and accessories.  
MODA & MOH APPROVED



BOGE KOMPRESSOREN GmbH:  
Bielefeld Lechtermanshof, GERMANY  
Air compressors, Air dryers and accessories.  
MODA & MOH APPROVED



CHART- Ferox GmbH:  
Solingen, GERMANY  
Cryogenic Storage Tanks (O2/N2/CO2/ARGON),  
Vaporizers and accessories.

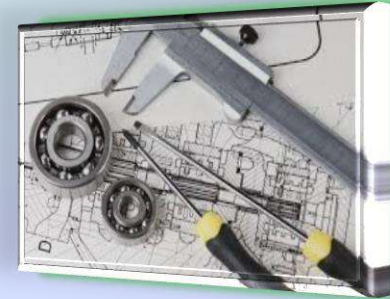
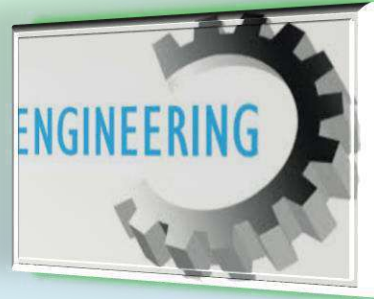


The Lawton Tube Co. Ltd.  
Torrington Avenue, Coventry, CV4 9AB, UK  
Medical Copper Tubes & Fittings  
MODA & MOH APPROVED



Everyone at the Couta Group is working towards the same goal. To help plumbers get the job done easily and efficiently with top quality products and expert advice, at competitive prices. We've been working with the construction and plumbing industries for many years now and are committed to continuous innovation and improvement to always give you the best.

# THE Wood and Steel Work



**Wood Doors**  
الأبواب الخشبية

**Steel Doors**  
الأبواب المعدنية

**S/S Work & Cladding**  
أعمال تكسية الحوائط



# DKS

شركة دار الكون السعودي

DAR AL KAWN AL SAUDI

**R**efrigeration **S**YSTEMS

أنظمة التبريد

# COLD ROOMS

## غرف التبريد

We supply Cold storage rooms for: pharmaceuticals and dates items, Cold storage rooms for meat, Cold storage rooms for vegetables and fruits, dairy Cold storage rooms, cheese and juices, egg coolers, refrigeration rooms for fish, freezing rooms for all types of freezer.

Our team is ready to execute your projects using the best materials and latest technology.

Walk-in coolers are assembled from standard elements manufactured by different European and American companies in a large range of sizes. All PUR/PIR sandwich panels of different thicknesses - ranging from 40 to 200 mm - will maintain controlled temperatures ranging from -30C° to +80C°. Our panels are suitable for indoors and outdoors applications.

Sandwich panels used for cold rooms are anchored together using cam-locks - molded during the manufacturing process of the panels - to create a self-supported stable structure. Floor panels are reinforced with specially treated marine plywood that can withstand and distribute loads up to 2.5 tons per m<sup>2</sup> and protect against impact.

غرف تبريد أدوية و تمور ، غرف تجميد رطب ، غرف تبريد لحوم ، غرف تبريد خضار وفواكه ، غرف تبريد الألبان والأجبان والعصائر ، غرف تبريد البيض ، غرف تبريد للأسماك ، غرف تجميد لجميع أنواع المجمدات.

فريق عملنا على أتم استعداد لتنفيذ مشروعاتكم باستخدام أفضل المواد وبأحدث التقنيات.



# COLD ROOMS

غرف التبريد



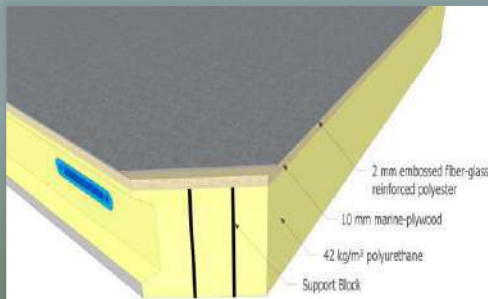
## الألواح العازلة للجدران والسقف والأرضيات

### الألواح العازلة للجدران والسقف:

ألواح من صفائح معدنية سماكة ٠.٥ ملم بيضاء اللون مجلفنة من الداخل والخارج معالجة حرارياً بمادة البوليوريثان الرغوية لتأمين العزل الحراري بكثافة ٤٢ كغ \ م<sup>3</sup> سماكة العزل ١٥ سم، ويتم عمل تقوية للألواح بواسطة عمل تضلعات للصاج من الداخل والخارج ، وتربط الألواح مع بعضها البعض بطريقة التداخل (التعشيق) ( Male & Female ) لمنع حصول أي تسرب للهواء ، ويتم تركيب زوايا ألومنيوم من الداخل عند التقاء الجدران مع السقف والأرض وتركيب زوايا من الخارج ( فلاشنج ) ، الألواح حسب المواصفات العالمية ، صناعة محلية بالإضافة إلى الدعامات السقفية التي تحمل السقف . معامل التوصيل الحراري : ٠.٢١ وات/م<sup>2</sup>/درجة كالفن

### الأرضية :

- أسمنت مسلح معزول مؤلفة من :
  - طبقة من البيتومين عازل للرطوبة سماكة ٣ ملم وهو عبارة عن رولات يتم مدّها على الأرض لكل غرفة
  - طبقة من العازل نوع ستيرافوم كثافة ٣٥ / م<sup>3</sup> سماكة طبقتين ( ٥ سم + ٥ سم ) ، تغطية العازل ستيرافوم بنايلون سماكة ٢٠٠ ميكرون.



## Insulated Panels

Our roof and wall panels provide thermal, water and sound insulation, fire safety in accordance with international and local regulations and the industry's specific needs. Our structural insulated composite panel range includes various thickness and length options together with an even larger selection of steel finishes and colours to the panel faces. Insulation thicknesses can vary between 50mm and 150mm to provide specified 'U' values and structural properties. Thickness of the panel facing (steel sheet, aluminum, stainless steel or others) and PUR/PIR filling material is determined in accordance with the application, area of usage and the amount of load they will bear. We use different joint profiles for different applications. Facings are available in finishes of: smooth or micro-ribs. We also supply finishing accessory products including Flashings and Ancillaries and are able to incorporate Hinged and Sliding, Manual and Automated doors of different sizes and thicknesses.



# Insulated Panels

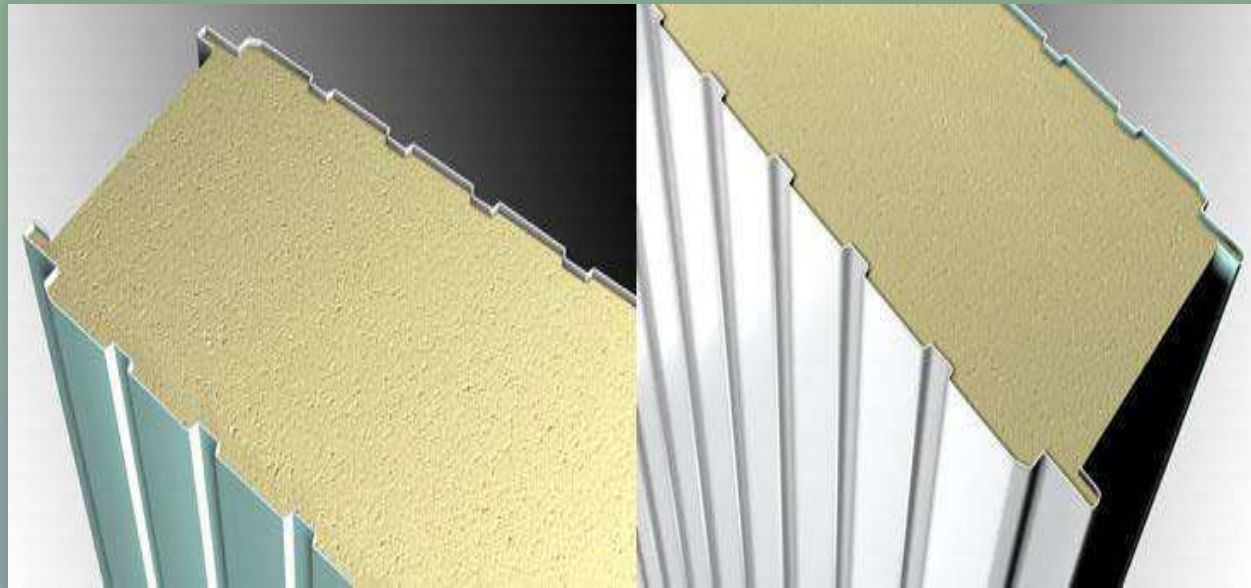
Use urethane insulated panels for cold storage facilities – if available – ½ thickness of expanded polystyrene panels, Recommended thickness for urethane insulated wall panels are:

6 cm 10 C and above

8 mm 4 C to 10 C

10 mm -4 C to 4 C

Use an additional 2 cm for ceiling panels



# INSULATED DOORS

## الأبواب

Could be used on frozen storages or cold storages. Easy to open and close, this is one of the mostly preferred door type. Our Cold Room Doors are being built as 90 x 190 cm. Different coloring and pattern options are provided when demanded

مزود بمفصلات ومسكات من النوع الصناعي ذو الجودة العالية المتحمل للعمل المستمر والشاق، وهو معزول بعازل البوليور يثان بكثافة لا تقل عن ٤٢ كغم/م<sup>٣</sup> ، كما أن الغلاف الداخلي والخارجي هو من الواح الصاج عالي الجودة مجلفن بطبقة من الزنك ومطلي بمادة البوليستر الملونة بواسطة أفران خاصة، وذلك لضمان غلاف ذو كفاءة عالية يحمي المعدن من عوامل الصدأ والتآكل ، والباب مزود بوسيلة أمان لفتح من الداخل في حالة أغلقه من الداخل. سماكة العزل ١٠ سم.

أبعاد الباب حسب طلب العميل.



# REFRIGERATION & FREEZING SYSTEMS

## REFRIGERATION SYSTEM:

Consists of refrigeration units which are controlling automatically the compressors upon the required cooling load.

## COMPRESSOR(S):

- Refrigerant R22 will be used
- (2) Germany made compressors, each 1.5 HP, one working
- Semi-Hermetic

## EVAPORATOR(S):

- (2) “Friga-bhon” - France made
- Easy access / quick disconnect fan, motor and mount assemblies.
- Room thermostat to control the operation of condensing unit and evaporator.
- Expansion valve.
- Drain heater.

## CONDENSING UNITS:

Condensing Units are selected as heavy-duty units for high ambient temperature.

## نظام التبريد :

تتكون مجموعة التبريد من كومبروسور ومكثف يبرد الهواء ومبخر وشبكة من الماوسير النحاسية والعزل الخاص بها مع معدات تحكم تتكون من صمام تمدد و فلتر و زجاجة بيان و صمام مغناطيسي ومحابس على خط السحب والطرء .

### ❖ وحدات التبريد :

وحدات التبريد الخارجية للغرف نوع تبريد هواء مزودة بكمبروسور صناعة اوروبية بالمواصفات التالية :

- قوة الكمبروسور لكل غرفة تعتمد على مساحتها .
- خط الكهرباء : 220 فولت - 380 فولت - 60 ساكل
- غاز التبريد : فريون R22 .

• يتم تركيب وحدات التجميد في مكان جيد التهوية (بالسطح - الممر الجاني)

- تم حساب المسافة بين وحدة التبريد والغرفة من (6 - 8) متر بالنسبة للمواد وما زاد عن ذلك يكون بتكلفة إضافية 300 ريال \ المتر شاملة المواسير والأسلاك .

### ❖ المبخرات :

صناعة أوروبية كامل بملف التبريد والمراوح والمحركات الكهربائية و جميع أجهزة الوقاية والتحكم الكهربائية والميكانيكية وسخان كهربائي لإذابة الثلج، والكل مثبت داخل غلاف من الصاج المجلفن المقاوم للصدأ . عادة يتم تركيب واحد لكل وحدة تبريد بالمواصفات التالية :

النوع جداري

- خط الكهرباء : 220 فولت - 380 فولت - 60 ساكل
- غاز التبريد : فريون R22

ملاحظة: يتم تزويد العميل بالمواصفات الفنية حسب مواصفات وسعة الثلاجة سواء تبريد او تجميد، المقصود بالصناعة الاوروبية إما الماني او ايطالي حسب المتوفر وجميعها ذات جودة عالية.



## Our Products



**Dual discharge industrial unit coolers  
CDH**



**Unit coolers for reach-in cabinet MMC**



**Industrial glycol air coolers CHSW-  
LHSW**



**New LMC Condenser - NanoGIANT**

## Our Products



**Copeland Outdoor Condensing Unit  
Germany**



**White-Rodgers Single Stage  
Programmable Thermostat**



**robust condensing unit**



**Bitzer Condensing Unit**

# CONTROL PANELS

## OPERATING SYSTEMS:

- Semi-hermetic air-cooled compressor
- Liquid line filter-dryer and sight glass
- High efficiency aluminum fin, copper tube condenser
- Electric panel with compressor contactor and fused control circuit
- Adjustable dual pressure switch
- Suction and discharge service valves
- Weather proof electrical control box
- Large receiver with fusible plug and liquid shut off valve with charging port
- Long life unit and bearing fan motors
- Steel base with raised legs
- Solenoid valve
- Expansion valve
- SAFETY & PROTECTION: Main circuit breaker.
- Compressor's contactor and overload.
- Pilot lamp for compressor run, trip and defrost on.
- Evaporator's fan contactor.
- Defrost heater contactor and overload (if applicable)
- Electronic thermostat & temperature display.
- Mechanical timer for defrost timing control.
- Solenoid valve with coil.
- Light feeding switch
- On / OFF switch(s)

## لوحة التحكم

- يتم تركيب لوحة تحكم بقطاع رئيسي لكل وحدة تبريد تتحكم بعمل وحدة التبريد بشكل اتوماتيكي و تتكون من:
- موصل للتحكم في حالي وجود حمل عالي للتحكم بالضواغط والمبخرات والسخانات.
- فيوزات + مفاتيح تحكم + لمبات ارشادية + مفاتيح تشغيل.
- جميع المواد اللازمة للتركيب والتشغيل والاكسسوارات من مواسير نحاس مغلقة ومضغوطة واكسسواراتها والأسلاك الكهربائية والأكواع وفلاتر ومانع اهتزاز واكسبنشن فالف وسايث كلاس وسالونيد فالف ومراقب الضغط.





# COPPER PIPES

## شبكة المواسير

مواسير نحاسية بأقطار تتناسب مع متطلبات الغرفة معزولة بعزل خاص بها من مادة الأورما فلक्स.



# Mortuary Storage Solutions

## ثلاجات حفظ الموتى

لدينا جميع أنواع ثلاجات حفظ الموتى مع المستلزمات الضرورية



# Mortuary Storage Solutions

## ثلاجات حفظ الموتى

- وحدة غسيل متكاملة
- حامل جثث يدوي وكهربائي
- نقالة متعددة الموديلات



## Cadaver Handling & Storage

## Pedestal Autopsy Tables



## Body Transporters & Trays



# Mortuary Storage Solutions

## ثلاجات حفظ الموتى

- ترولي نقل جثث مع غطاء متعددة الموديلات
- منشار قص وادوات جراحية خاصة بالتشريح



Covered Cadaver Carriers



Autopsy Saws & Vacuums

## Our Partner in Business



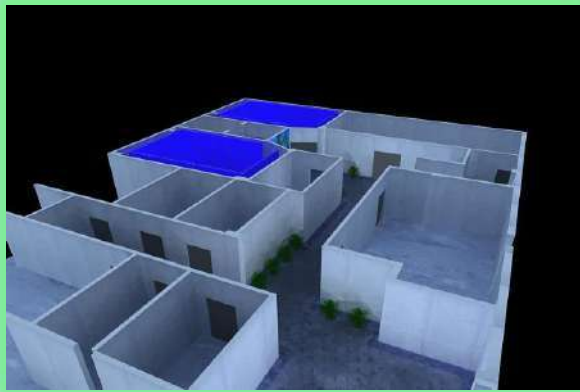
# **DECORATION AND INTERIOR DESIGN**



# DECORATION AND INTERIOR DESIGN

Specializing in High End Residential and Commercial interior design services. **DKS** is a professional interior design company and space planning firm recognized for innovation.

Our firm expertise is in space planning and implementation based on client's needs, tastes and budget. The client's participation is encouraged in every phase of the project. Each project receives personal attention from our experienced designers and interior decorators, enabling clients to achieve excellent value for every SR invested. We work closely with architects and clients to determine the structure of a space planning, the needs of the occupants, and the style that best suits both.



# VISUAL Therapy

## VISUAL THERAPY

Replacement image panels for installation in ceiling and wall mounted light boxes. These back-lit panels are often found in hospital, MRI and healthcare facilities



Art Research Institute Ltd.

[vi·su·al ther·a·py]

USA

## GRG, GRC & GRP Composite Works

### Glass Reinforced Gypsum ( GRG)

Glass Fiber Reinforced Gypsum consists mainly of ultra-fine alpha plaster and glass fiber reinforcement. The GRG can be cast into virtually any shape and any size. The material is extremely lightweight, strong & fire proof. They have good thermal insulation, thermal conductivity is very low.

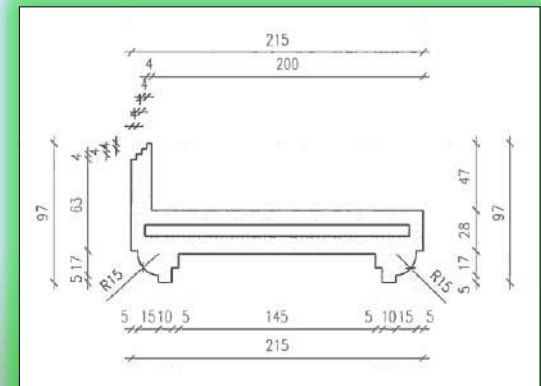
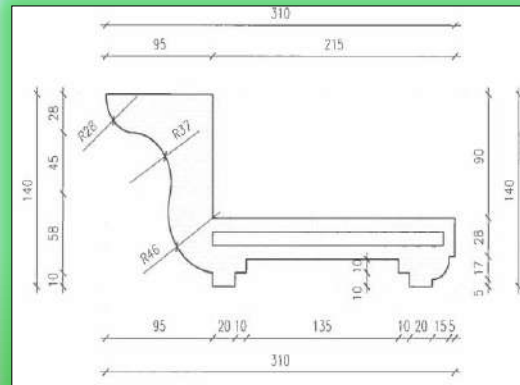
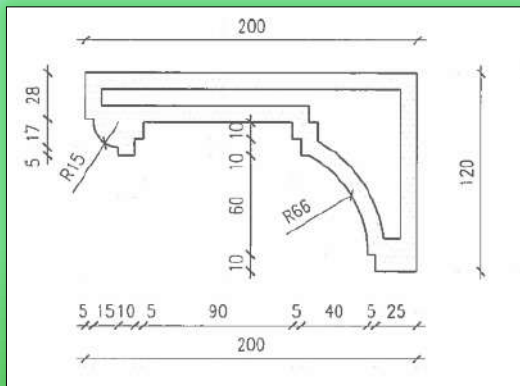
Our team has executed many projects at Malls, Airports & Office establishments. Whatever the job, we can do it quickly, easily, economically and beautifully.

### Glass Reinforced Plastic (GRP)

Are essentially structural materials that belong to the larger family of composite materials. The composite basically consists of glass fibers and polyester resin that has excellent mould ability with several desired qualities such as lightweight, high strength, high stiffness, toughness, chemical resistance, electrical properties, aesthetic appeal, etc.

### Glass Reinforced Cement (GRC)

This is a combination of specially developed Alkali Resistant (AR) glass fibers and cement sand mortar. The resultant composite is a concrete like material combining the compressive properties of cement mortars with the valuable flexural and tensile strength of the glass fibers. It is in many ways similar to concrete but its higher cement content and lower permeability make it more resistant to moisture penetration, atmospheric attack or sand erosion. The high cement and low aggregate content also result in higher moisture movement than concrete, although thermal movement is similar.





## GRG, GRC & GRP PROJECTS



## GRG, GRC & GRP PROJECTS





## Facade Solutions

واجهات المباني



HPL



Honeycomb Cladding



Terracotta



Custom Design



## Sun Control Solutions

حلول التحكم في الشمس



Roller Blinds



Venetian Blinds



American Curtains



Tension Systems



Tensile Shades



Louvers



Sliding Folding Shutters



Architectural Rolling Shutters



Awnings

## CUBICAL CURTAINS

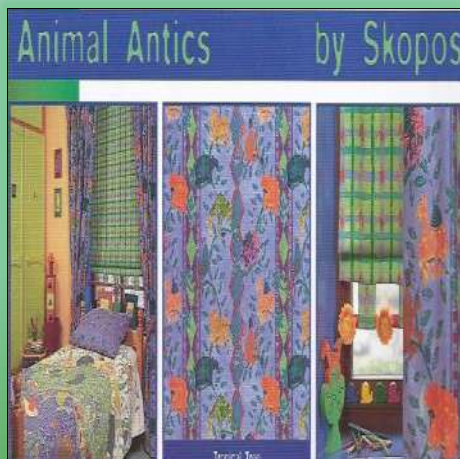
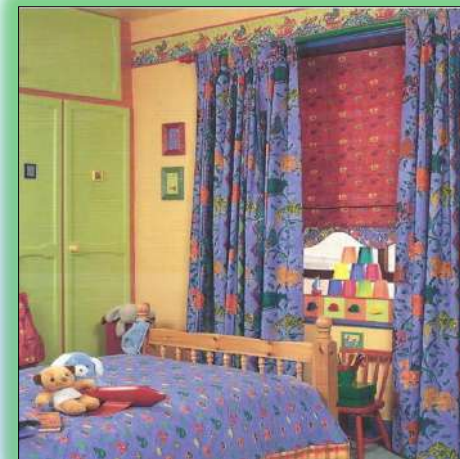
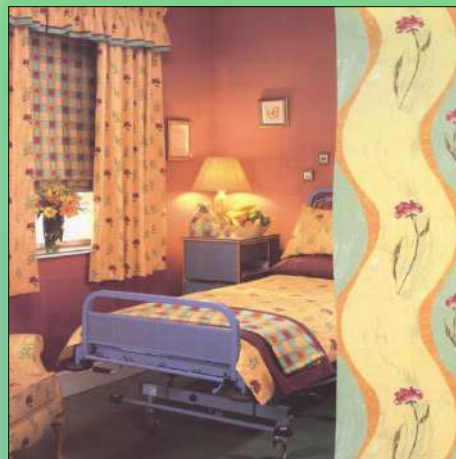
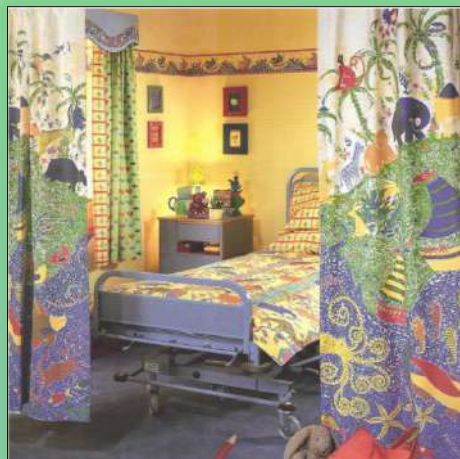


**SKOPOS: Seasons collection** has been designed specifically for hospitals and nursing homes and is inspired by the changing images of nature through the year. Think new buds, fragrant blossoms, soft breezes, colourful blooms, heat haze and swirling leaves which are portrayed through a colourful, contemporary collection. With modern florals, spots, abstracts and a striking horizontal stripe, Seasons create a fresh, airy, light interior space which absorbs the natural surroundings. Seasons fabrics are suitable for cubicle and window curtains, duvet covers and counterpanes. They are **permanently flame retardant** to full NHS specifications and are fully washable to temperatures required for thermal disinfecting.





## CURTAINS: Hospitals

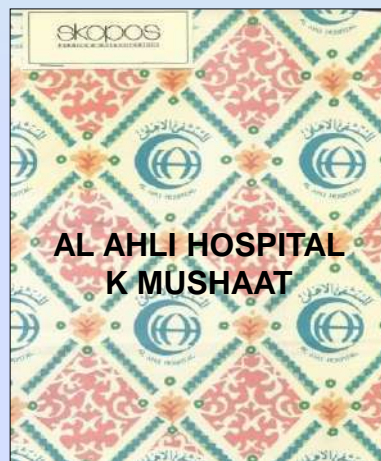




## Curtains: Hospitals, Universities, Schools and other Sectors



**AL JABER M  
CENTER**



**AL AHLI HOSPITAL  
K MUSHAAAT**



**KFH - MOH**



**KKUH-RIYADH**



**STEEL CURTAIN**



**STEEL CURTAIN**



**CUBICAL CURTAIN**

## Curtains: Hotels, Palaces, and other Sectors



SANDRINGHAM PELMET



WESTMINSTER PELMET



GUINEVIERE PELMET



KENSINGTON PELMET



LANCELOT PELMET



WINDSOR PELMET



CANTERBURY PELMET  
pelmet permanently stitched to curtain

SKOPOS MANUFACTURE  
HUNDREDS OF FABRIC  
DESIGNS FROM WHICH  
CURTAINS CAN BE MADE.

ALL SKOPOS FABRICS ARE  
PERMANENTLY FLAME  
RETARDANT AND MOST  
ARE SCOTCHGARD  
SOIL RESISTANT.



skopos  
FABRICS & WALLCOVERINGS

*This is only a small selection of the Skopos standard or custom-made styles available.*

### SWAGS AND TAILS

*Bold and dramatic, swags and tails are one of the most exciting ways to enhance the decor of any room.*



SUFFOLK SWAGS AND TAILS  
to be fixed to a pole



TUDOR SWAGS AND TAILS  
to be fixed to a pole



SEYMOUR SWAGS AND TAILS

### HARD TAILORED PELMETS

*From the understated to the stately, these pelmets work well in large or small room settings, wherever formal elegance is required.*



PUTNEY PELMET

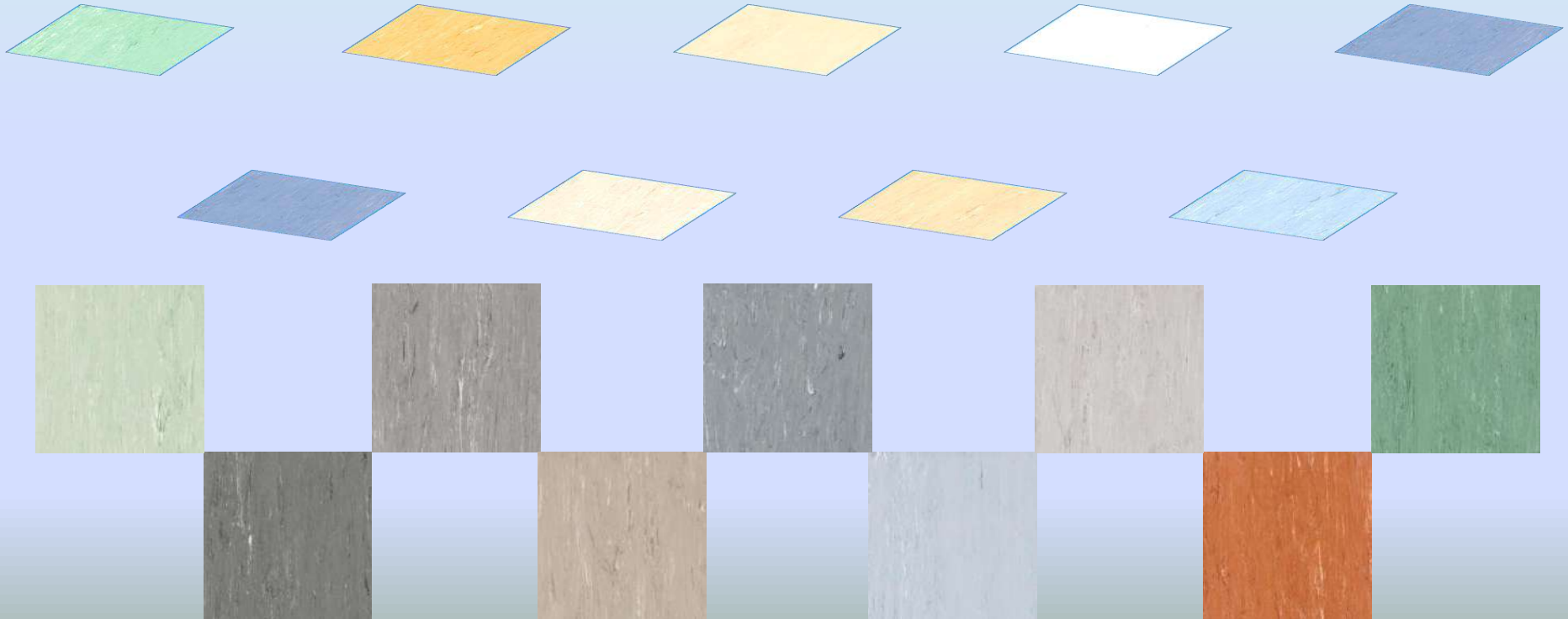


FARTHINGALE PELMET

*This is only a small selection of the Skopos standard or custom-made styles available.*

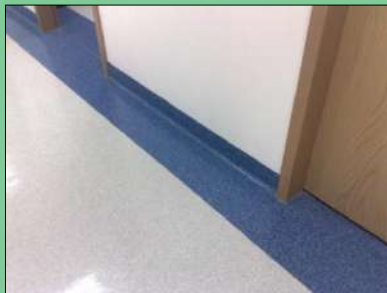
## VINYL AND VISUAL THERAPY SYSTEM

- Homogeneous multipurpose flooring suitable for normal to heavy traffic areas.
- Densely compacted surface for improved wear and ease of maintenance.
- Polyurethane (PUR) surface treatment: ease of maintenance.
- Anti-bacterial and fungicidal.





## VINYL: Hospitals, Healthcare Centers, Universities and commercial centers



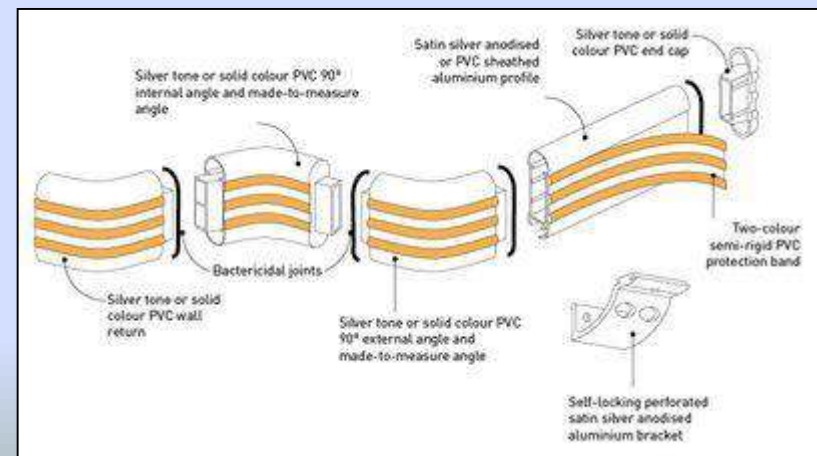
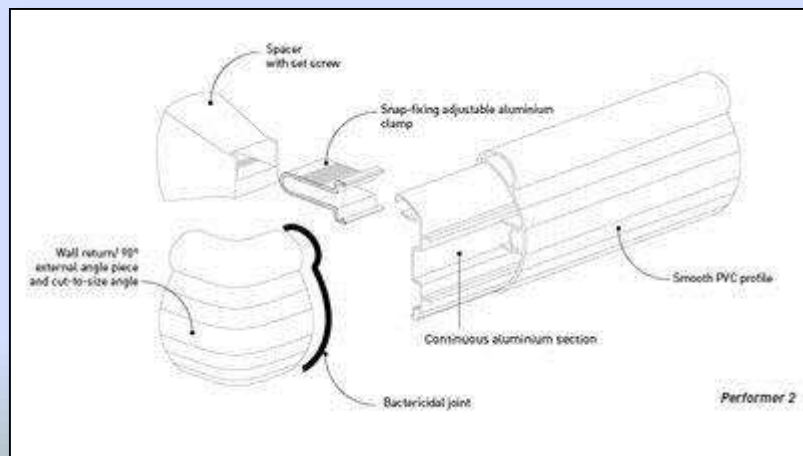
# PROTECTION SYSTEM

## Handrail Wall Protection System

### Handrail

#### Applications:

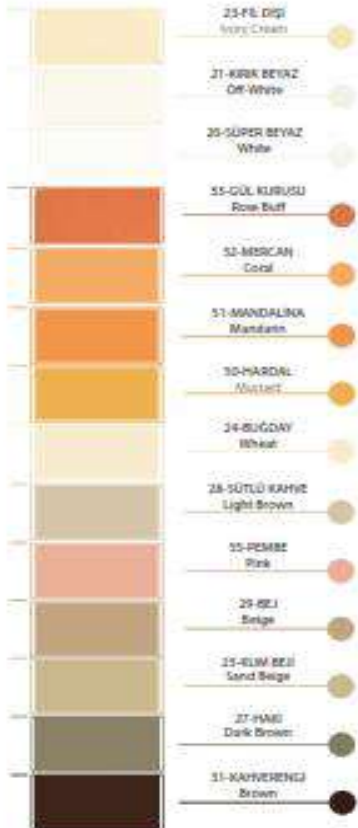
Offering both excellent handgrip and impact resistance for corridors, this protection handrail features the panted mounting system Autoclip® which makes the handrail installation easier and quicker. Ideal for all public buildings: hospitals, clinics, re-education centers, retirement homes. It is fitted with bactericidal joints.



# PROTECTION SYSTEM

## Handrail Wall Protection System

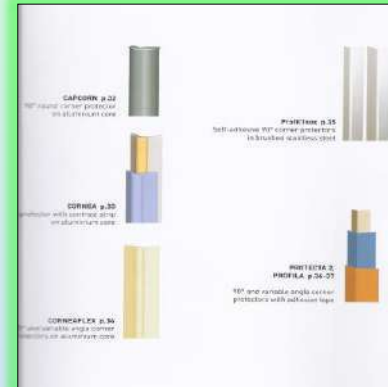
Düvar Koruması Ürünlerimiz renk çeşitliliği, geniş yelpazeye yayılmış renk çözümlerimiz, müşterilerimizde beklentilerinin de ötesinde seçenek sunmaktadır. Our Wall protection products are colorful. Wide variety of color solutions gave lots of alternative to our customer more than they expect.



Handrail wall protection system / WG145 / 145 mm EL TUTAMAKLI DUVAR KORUMA BANDI	10 - 11
Handrail wall protection with led lighting / WG145-1 / 145 mm EL TUTAMAKLI LEDLİ DUVAR KORUMA BANDI	12 - 13
Handrail wall protection system / WG146 / 145 mm EL TUTAMAKLI DUVAR KORUMA BANDI	16
Handrail wall protection system / DC140 / 140 mm EL TUTAMAKLI DUVAR KORUMA BANDI	17
Handrail wall protection system / WG152 / 152 mm EL TUTAMAKLI DUVAR KORUMA BANDI	18 - 19
Handrail system / WG50 KUPESTE SİSTEMİ	20 - 21
Handrail system / WG50 KORKULUK SİSTEMİ	22 - 23
Stainless handrail system / WG42 PASLANMAZ KUPESTE SİSTEMİ	24
Vinyl handrail system / WG42-1 VINİL KUPESTE SİSTEMİ	25
Wall protection system / WG200 / 200 mm DUVAR KORUMA BANDI	28 - 29
Wall protection system / WG201 / 200mm DUVAR KORUMA BANDI	30
Wall protection system / DC200 / 200mm DUVAR KORUMA BANDI	31
Wall protection system / DC150 / 150 mm DUVAR KORUMA BANDI	32 - 33
Wall protection system / WG150 / 150 mm DUVAR KORUMA BANDI	34 - 35
Wall protection system / WG100 / 100 mm DUVAR KORUMA BANDI	36
Chair rail / CR50 / 50 mm SANDALYE SIRTILIKI	37
Decorative PVC skirting with cable channel / DC101 / 100mm KABLO KANALLI DEKORATİF PVC ŞÜPÜRGELİK	38
Decorative wall protection system / DC100 / 100mm DEKORATİF DUVAR KORUMA BANDI	39
Vinyl plates / WG1004 / 1000 mm VINİL PLAKA	42
Vinyl wall protection plates / WG154 - 204 - 304 VINİL YAPIŞTIRMA PLAKALAR	43
Door kick-protection profiles / WG150-2 KAPITEKMEKLİĞİ	44
Vinyl door kick-protection profiles / DG 01-02-03-04 VINİL KAPI TEKMEKLİKLERİ	45
Corner protection / CG50 / CG50B KOŞE KORUMA	48 - 49
Corner protection / CG76 / CG76A KOŞE KORUMA	50 - 51
TPE wall protection system / RG200 TPE DUVAR KORUMA	54
Rubber wall protection system / RG150 KAUÇUK DUVAR KORUMA	55
TPE corner protection / RG100 TPE KOŞE KORUMA	56
Rubber wall protection / RG80 KAUÇUK KOŞE KORUMA	57
Stainless Steel Corner Guard Profiles / CG (50S - 75S - 100S) PASLANMAZ KOŞE KORUMA	60
Stainless Steel Door Kick Plate And Door Protection Plate / KP 85-105- 115-125 PASLANMAZ KAPI TEKMEKLİĞİ ve BANTLARI	61



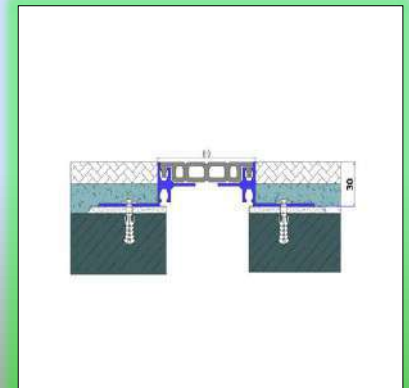
# PROTECTION SYSTEMS AND EXPANSION JOINT



## Technical Specifications:

WG 152 Handrail Wall Protection System is decorative wall protection band with 152 mm width and 85 mm depth. A continuous aluminum retainer is fastened to the wall 60-75 cm space by using mounting brackets. Vinyl coated wall protection system is resistant to scratching and absorbs the impacts through lower rubber inserts and offers modern solutions by decorative right and left returns. Profile length is 4 meters and produced in 32 different colors. Thanks to a specific antibacterial formulation which does not contain any heavy metal ingredient, it is ideal for use in health like hospitals, nursing houses and clinics.

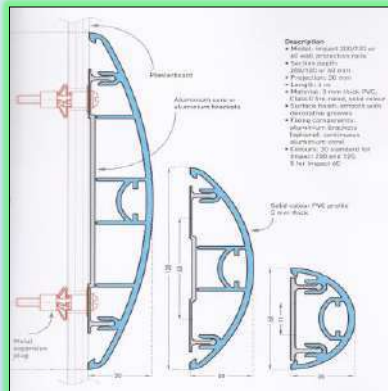
## Expansion Joint Profiles



**PROTECTION SYSTEM :WALL GUARD**

## Applications:

This horizontal protection system features contoured design to bring you the perfect combination of impact resistance and sheer good looks. Fitted at one or two levels, it protects walls exposed to intensive wheeled traffic in corridors, entrances and storage areas typically in hospitals, clinics, retirement homes, laboratories, hotels, restaurants, schools, department stores.



## Technical Specifications

WG 200 is a wall protection band which is 200mm width, 35mm in depth, and is mounted against the wall with a continuous aluminum profile and rubber insert. It absorbs the shocks with its bottom rubber insert. It is decorative with its vinyl cover. With the same color of end parts with its vinyl cover, it makes for an excellent system. It is produced in 12 different colors and installed on walls with different fixing elements with an interval of 50-60 cm according to wall's materials. Product's length is 4 meters.

# CORIAN BENCH TOP AND NURSE STATION



## ADVANTAGES:

- Hardness, Strength, Resistance to high temp., durability, Resistance to chemicals, Impact resistance, Scratch resistance



# CORIAN BENCH TOP AND Dental CABINETS



# Anti Bacterial CORIAN Cladding for Operating & Clean Rooms



# Anti Bacterial CORIAN Cladding for Operating & Clean Rooms





# **MEDICAL SUPPLY AND SERVICES**

**MODULAR OPERATING  
THEATRES**

**RADIATION PROTECTION  
SYSTEM**

# MEDICAL SUPPLY AND FURNITURES

**DKS** Supply of Medical, Scientific and Laboratory equipment,



# MEDICAL SUPPLY AND PROJECTS





# MEDICAL SUPPLY AND SERVICES



## QUITE SMOKING CLINICS

## عيادات علاج المدخنين





# MEDICAL SUPPLY – QUIT SMOKING PRODUCTS

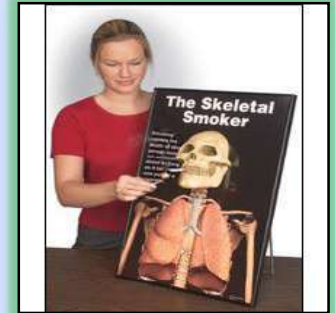
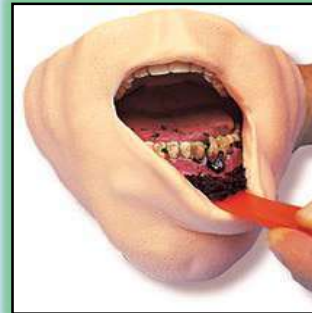
جهاز قياس غاز أول أكسيد الكربون



جهاز قياس وظائف الرئة



جهاز العلاج بالكهرباء  
ELECTROTHERAPY UNIT





## MEDICAL Supply – AMBULANCES



# **MODULAR OPERATING THEATRES**

# MODULAR OPERATING THEATRES (ROOMS)

Viessmann modular operating theatres combine optimum flexibility with full compliance to hygiene standards and disinfection guidelines. The surfaces are made of galvanized sheet steel or stainless steel and finished with certified, antimicrobial *SilverRock®* powder coating, and have excellent resistance to chemicals and mechanical wear and tear. Wall thickness 50 - 350 mm. Flush sterile glazing, with a long-lasting, flexible seal, incl. motorized Venetian blinds. Radiation protection furnishings for solid walls, glass elements and doors.



## Benefits at a glance

- Flexibility and freedom of design for designers, builders and operators
- Minimum construction time and hence enormous cost savings
- Quality maintenance through industrial prefabrication





# MODULAR OPERATING THEATRES and S/S/HPL CLADDING



- Special elements to integrate X-ray screens, control panels, electric distribution elements
- Utility supply units for medicinal gases and electrical supplies



- Flush vertical air ducts, integrated into the walls
- With lint separators
- Manual and automatic single-action and sliding doors
- Flush wall-integrated furnishings
- Ceiling system with ergonomically optimized surroundings lighting



## MODULAR OPERATING THEATRES – TABLES, PENDANT AND LAMINAR FLOW



## REVOLVING AND SLIDING DOORS





# **Radiation & MRI Protection Systems**

# X-RAY SHIELDING SYSTEMS

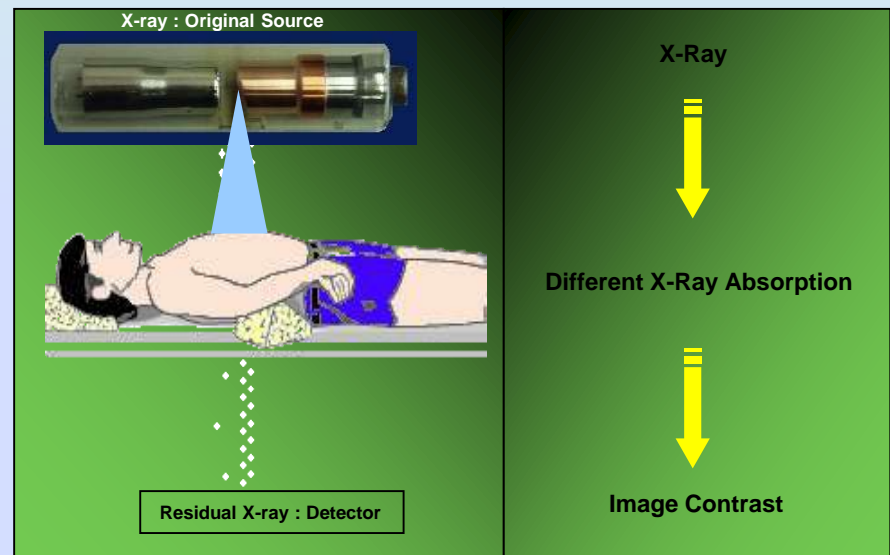
X-Ray shielding systems consist of lead-lined plywood or lead-lined drywall paneled walls, lead-lined doors, and leaded viewing windows, all of which are based on the final physics design and architectural requirements. Shielding can be used in both new facilities and to upgrade existing rooms to accommodate an x-ray system.

**DKS** works to provide competitively-priced solutions for full systems or components. Our involvement in X-Ray shielding systems can range from supplying the products to supervising construction and installation to providing complete turnkey services. Our qualified teams of designers have a proven track record of X-Ray installations throughout the world, and always work one-on-one with clients to create the most cost-effective solutions.

## USES

DKS X-Ray Shielding Systems are used for rooms with low energy x-rays and gamma rays for both medical and industrial uses.

## X-Ray Principle



## SHEET LEAD

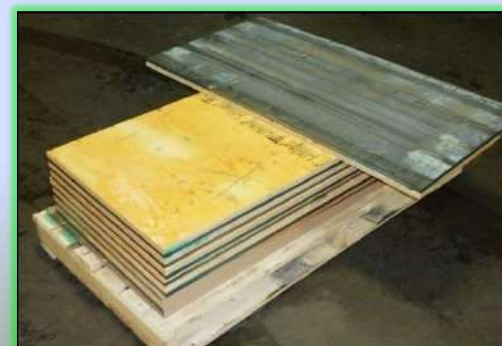
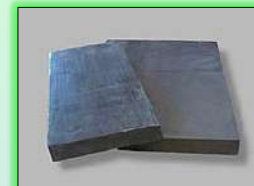
**DKS** Offers Sheet Lead for Many Applications Including:

Radiation Shielding - Laboratories, Hospitals, Dental Offices and Veterinary Clinics,

- Construction - Roofing, Flashing and Waterproofing
- Corrosion Protection - Acid Storage and Handling - Autoclaves - Precipitators
- Movable Lead Screens
- Sound Barriers and Sound Proofing
- Nuclear Energy Shielding
- Tank Lining
- Vibration Absorbers

**DKS** provides Sheet Lead with a consistent and high density manufactured from pure lead conforming to ASTM B-29, B-749 and Federal QQ-L-201F, QQ-L-171E. We use only the purest lead available. Our sheet lead is 99.94% pure lead. Absolutely no refining is performed in the manufacturing of our sheet lead. DKS is only interested in providing its customers with the highest quality sheet lead available in the market place today

drywall is laminated with sheet lead that is designed to cover necessary surfaces or walls in a room requiring radiation shielding. It is affixed to surfaces or walls ensuring a continuous layer of sheet lead under the drywall to a specified height. It is used in new construction or shielding upgrades/renovations for P.E.T and other types of diagnostic imaging rooms.






## RECOMMENDED LEAD SHEET THICKNESS FOR X-RAY ROOMS

<i>Recommended Lead Sheet Thickness' for X-Ray Rooms</i>			
<i>X-Rays Generated by Peak</i>	<i>Minimum Thickness of Lead</i>		<i>Weight per Square</i>
<i>Voltages Not Exceeding</i>	<i>Millimetre</i>	<i>Inches</i>	<i>Foot in Pounds</i>
75 kv	1	0.039	2 1/2
100 kv	1.5	0.059	4
125 kv	2	0.079	5
150kv	2.5	0.093	7
175 kv	3	0.118	8
200 kv	4	0.157	10
225 kv	5	0.197	13
300 kv	9	0.354	24
400 kv	15	0.591	38
600 kv	34	1.343	81
900 kv	51	2	120

## RECOMMENDED LEAD GLASS THICKNESS FOR X-RAY ROOMS

TUBE VOLTAGE RANGE (KV)	LEAD LGASS THICKNESS (MM)	LEAD EQUIVALENT
75	8	1.50
125	10	2.00
150	12	2.50
200	15	3.00
300	20	4.00
511	36	7.50

# LEAD APPROVAL AND TESTING CERTIFICATES FROM CERTIFIED ORGANIZATIONS



مستشفى الملك فيصل التخصصي ومركز الأبحاث  
King Faisal Specialist Hospital & Research Centre  
Gen. Org. مؤسسة عامة

**Biomedical Physics Department**  
**Secondary Standard Dosimetry Laboratory**  
**LEAD EQUIVALENT THICKNESS TEST**

**Customer:** Dar Al-Kawn Al-Saudi Services (DKS)

**Address:** Riyadh, Saudi Arabia

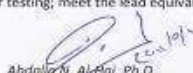
**Description of the sample:**

Sample size: 12.2 cm X 16.4 cm  
Total thickness: 1 cm  
The sample has a slot of lead and wood attached together  
The measured Lead sample thickness = 2mm  
The measured Wood sample thickness = 8mm

**Testing method:**  
Standard reference source Cs-137 has been used at the SSDI facility of KFSH&RC  
Source Activity: 61.7 GBq (1.67 Ci) @ May 4, 2011


**Result:**  
The total lead equivalent thickness of the sample is 2.99 mm  
(This includes the 8mm thickness of wood)

**Conclusion:**  
The sample brought for testing; meet the lead equivalent thickness specified by the manufacturer.

**Report prepared by:**  **Abdallah N. Al-Maj, Ph.D.** **Date:** May 7, 2011  
Chief Health Physicist

منذ: ٢٠٢٢ ق. ر. م. ١٤٤٤ هـ  
P.O. Box: 3356 Riyadh 11421 Kingdom of Saudi Arabia • Tel: 4447272 • Fax: 4414839 • www.kfshrc.edu.sa

Form 11100-02 (Rev. 09-27) I.C. 202040 Printed by Reprographics (Print Shop) KFSH&RC



**SOCOTEC**  
شركة سوكوتيك السعودية  
SAUDI SOCOTEC COMPANY

Head Office :  
P.O. Box 5430 Riyadh 11413  
Tel: (01) 4817280  
Fax: (01) 2799187

المركز الرئيسي  
ص.ب. ٥٤٣٠ الرياض ١١٤١٣  
هاتف: ٠١-٤٨١٧٢٨٠  
فاكس: ٠١-٢٧٩٩١٨٧

**For : SAUDI OGER**  
P.O. Box 1449  
Riyadh 11431

## CERTIFICATE OF COMPLIANCE FOR LEAD LINING PLYWOOD

THIS CERTIFICATE IS ISSUED TO CERTIFY THAT THE FOLLOWING MATERIAL

LEAD LINING PLYWOOD 9mm + 2mm LEAD THICKNESS  
Dimension of each piece is 2440 mm x 1220 mm  
Number of pieces = 216

**INSPECTED AT**  
PNU – PN04 – Building 4.2.0 – Medical Center / Hospital


**IS MANUFACTURED BY**  
Radiation Protection Products, Inc.  
1000 Superior Boulevard, Suite 310  
Wayzata, MN 55391  
Phone: +1.888.748.4777  
Fax: +1.866.554.8445


**AND SUPPLIED ON SITE BY**  
DKS Jeddah

**ACCORDING TO**  
Submittal Reference MAT/P1/IA/B0316 Dated 23/Oct/2010 and approved by DAR on 11/Dec/2010  
Shipper Delivery No 128-140414-001-01 dated 24/Nov/2010 – Container INKU6306514

Reference of this Certificate: JM/037/LR/2011  
Date of issuance: February 8<sup>th</sup>, 2011

**Akram MAKI**  
Riyadh Area Projects Manager





المركز الرئيسي  
Head Office : Riyadh - P.O. Box 5430 Riyadh 11413 Tel: (01) 4817280 Fax: (01) 2799187  
Jeddah Branch : P.O. Box 1449 Jeddah 21413 Tel: (01) 4817280 Fax: (01) 2799187  
United Utility Company - With a capital of 1,000,000 SR - C.A. 5389

شركة سوكوتيك السعودية - رأس المال ١.٠٠٠.٠٠٠.٠٠٠ ريال سعودي - ر. م. ١٤٤٤ هـ - ٢٠٢٢ ق. ر. م. ١٤٤٤ هـ

## LEAD-LINED PLYWOOD

lead-lined plywood products provide radiation shielding for walls, ceilings, and floors in new construction or room upgrades for medical diagnostic and industrial modalities. All standard lead-lined plywood panels are formaldehyde-free, fire-rated plywood permanently laminated with uniform, defect-free lead of a specified thickness. To prevent leakage between panels, **DKS** supplies and can install lead strips of equal thickness. We offer several different lead thicknesses to accommodate various physics requirements and have the ability to customize plywood products to suit specific needs.

### USES

- Shielding
- PET/CT rooms
- HDR rooms
- Other diagnostic and industrial modalities





## LEAD-LINED DOOR SYSTEMS

Lead Lined Doors are an attractive way of shielding X-Ray, PET/CT, or nuclear medicine rooms. Several options are offered (wood type, grade, window options, and cuts) to ensure your shielded door will blend with any room's décor. Three types are available:

- Lead-lined, fire-resistant, 20-minute label wood
- Lead-lined, non-rated, solid core wood
- Lead-lined hollow metal

Doors come in a variety of shielding thicknesses, with lead from 1/16" to 1/4", so they can be used for a variety of modalities,

### Uses:

- Shielding rooms with x-rays, gamma rays, and PET/CT
- Shielding HDR enclosures
- Industrial and acoustical



## RADIATION THERAPY SLIDE DOOR

**DKS** supplier in USA has the largest installed base of shielded therapy doors in the Americas.

Slide Door Systems are designed, manufactured, and installed to meet the demanding needs of radiation therapy departments. These systems allow for the elimination of vault mazes and can also increase patient throughput. With a variety of thicknesses available, slide doors are acceptable for use in rooms with high and low energy machines.

Standard slide door packages include the steel-faced door, required shielding materials, a support and rail system, operating system, safety features, and installation.

Our supplier also offers Swing Door systems and an array of services, from helping you choose the best equipment for your facility to aiding in the design of your vault.

### USES

- Shielding rooms
- High and low energy linear accelerators
- Proton therapy
- Radiosurgery
- CT Image-Guided IMRT
- IMRT / IGRT
- Other medical and industrial modalities



## MRI SHIELDING SYSTEMS

**DKS** builds high quality, dependable, state-of-the-art MRI facilities. We offer two types of RF shielding to accommodate varying customer needs, MRI system specifications, construction requirements, and facility locations:

- Galvanized modular panel system
- Soldered copper sheet system
- Guardian Door

Because an MRI shield involves much more than just wall panels, **DKS** offers several site options and accessories to complete the shield. Learn more about our Optional RF Shield Components, including Magnetic Shielding Options.

We work closely with medical organizations and equipment manufacturers to adhere to all safety and health regulations. After installation is complete, our experts conduct tests to prove that all enclosures comply with the MRI equipment manufacturers' requirements and industry standards.



### USES

- Radio Frequency (RF) shielding for Magnetic Resonance Imaging (MRI) machines
- RF shielding for data/voice security, labs, and test rooms
- Magnetic shielding for Magnetic Resonance Imaging (MRI) machines

### Features and Benefits

- Versatility* - can easily be used in new or remodeled rooms
- Durability* - built for high traffic and high RF attenuation
- Customization* - dimensions and thicknesses to meet any design need
- Testing* - complete attenuation and ground testing





## **RADIATION THERAPY SHIELDING UPGRADES**

Since the healthcare industry is constantly changing, shielding upgrades are a common dilemma.

**DKS** constantly stays up to date with the latest technologies in both radiation therapy and diagnostic imaging, so we are prepared for any shielding upgrade needs. Our team of experts works closely with clients to find the most cost efficient solutions with the available space.

**DKS** can provide radiation therapy shielding upgrades by supplying and installing all materials, providing a full turnkey installation, or aiding in the design process. The upgrade design scope can include architectural, physics, and structural engineering.



## RADIATION THERAPY SHIELDING UPGRADES

### Components:

**High Density Concrete Block** is a space-saving shielding solution for maze and vault walls, as well as ceilings in both new facilities and vault upgrades or renovations. Available in a range of densities, these blocks are suitable for both high and low energy linear accelerator vaults and shield both gamma and neutron radiation. For maximum shielding integrity, each block is manufactured with our proven shielded tongue and groove interlocking design. To allow for modularity (and providing a potential tax-saving benefit), HD Concrete Blocks can be put in place without mortar. For optimal space and cost savings, this product can be used in conjunction with other materials, such as N-Series Interlocking Lead Bricks, MegaShield, or lead sheet.

### USES

- Low and high energy linear accelerators
- H.D.R. rooms
- Proton Therapy rooms
- Radio Surgery rooms
- CT Image-Guided IMRT Rooms
- Industrial and homeland security applications



**Interlocking Lead Brick** is a space-saving and environmentally friendly solution for adding shielding to an existing vault, or saving space in a new vault design. For maximum shielding integrity, these bricks feature a tongue and groove design that locks into place when bricks are stacked. They can be used in any part of the room, and are most frequently held in place with steel supports. The lead uses in our N-Series Interlocking Lead Bricks is recycled from both pre-consumer and post-consumer waste, making it eligible for up to two LEED™ credits.

### USES

- Low and high energy linear accelerators
- H.D.R. rooms
- Proton Therapy rooms
- Radio Surgery rooms
- Custom radiation shielding
- Nuclear medicine
- P.E.T.

Other radiation shielding applications where space savings is a priority, including industrial or homeland security applications



## PET/CT SHIELDING SYSTEMS

Unlike most diagnostic equipment, PET/CT systems require thicker shielding. **DKS** can design and provide PET/CT shielding systems for any machine or room type. Shielding thickness is dependent on a physics design report, which will dictate the type of shielding required. For thicknesses up to 2MM, lead-lined plywood can be used, while for greater thicknesses, Interlocking Lead Brick is recommended.

**DKS's** involvement in PET/CT shielding systems can range from design services to supervising construction and installation to providing complete turnkey services. Our qualified teams of designers, engineers and project managers have a proven track record of PET/CT installations throughout the world, and always work one-on-one with clients to create the most cost-effective solutions.

### USES

PET/CT Shielding Systems are used for rooms with low energy x-rays and gamma rays.





## MEGASHIELD MODULAR BLOCK

MegaShield™ was created by **NELCO** as a competitively priced, modular alternative to a poured cast-in-place (CIP) vault. Each MegaShield™ system is made up of interlocking concrete blocks, available in both standard and high density weights. These blocks are cast at a local, off-site, pre-approved and qualified facility, allowing **NELCO** to manufacture them during the permitting process. Blocks arrive on site cured and ready to assemble, reducing construction time significantly. MegaShield™ vaults can be assembled in as little as four weeks.

The system can be erected outside a building, or inside of most existing facilities, and can be used for a variety of modalities. MegaShield™ can also be removed and relocated, making it the ideal solution for leased spaces. When space constraints are an issue, a hybrid model of MegaShield™ and other shielding, such as Interlocking Lead Brick or High Density Concrete Blocks, can be designed. Other options include site work, foundation work, interior finish, and mechanical and electrical systems.



### USES

- Linear accelerator vaults
- Proton therapy rooms
- Shielding CT Image-Guided IMRT
- Industrial uses (such as non-destructive testing and homeland security applications)

## LEAD PRODUCTION LINE



# X-RAY LEAKAGE INSPECTION TOOLS

Kingdom of Saudi Arabia  
King Abdulaziz City for  
Science and Technology  
Institute of Atomic Energy Research

المملكة العربية السعودية  
مدينة الملك عبد العزيز  
للعلوم والتقنية  
معهد بحوث الطاقة الذرية

CERTIFICATE OF CALIBRATION

Date of issue: 08-02-2009  
Serial Number: 2009-02-08 Cal 0211

The name and address of the client: Dr. Alhassan Ahmad EST.

Date of issuance of instrument: 01-03-2009

Place of calibration:  
Institution: Radiation protection survey course  
City: Jeddah  
Type of Detector: Ionization Chamber  
Serial number: 1400

Measured quantity: Ambient dose equivalent of  $^{60}\text{Co}$  radiation beam

Calibration method:  
The calibration was performed using KACST's secondary standard ionization chamber type PTW 33022, No. 195, traceable to the primary standard of air kerma at National Office of Metrology (Public Housing). During the calibration of the chamber, collected charge of  $\approx 400 \text{ nC}$ ,  $E(191\text{P})$  300-1000 nC, and  $E(4204\text{K})$  in diameter of calibrated  $^{60}\text{Co}$  beam were applied according to the PTW33022's standard.

Environmental conditions:  
Temperature:  $(22.6 \pm 0.3)^\circ\text{C}$   
Pressure:  $(1010.0 \pm 0.05) \text{ Pa}$   
Relative humidity:  $(29 \pm 1) \%$

Class and date of calibration:  
Atomic Energy Research Institute,  
Laboratory of Calibration, Riyadh,  
08-02-2009

Valid until calibration:  
Temperature:  $25^\circ\text{C}$   
Pressure:  $101.325 \text{ kPa}$   
Relative humidity:  $65 \%$

This certificate may not be reproduced other than in full except with the prior written approval of the issuing laboratory and the customer.

Kingdom of Saudi Arabia  
King Abdulaziz City for  
Science and Technology  
Institute of Atomic Energy Research

المملكة العربية السعودية  
مدينة الملك عبد العزيز  
للعلوم والتقنية  
معهد بحوث الطاقة الذرية

CERTIFICATE OF CALIBRATION

Date of issue: 08-02-2009  
Serial Number: 2009-02-08 Cal 0211

The name and address of the client: Dr. Alhassan Ahmad EST.

Date of issuance of instrument: 01-03-2009

Place of calibration:  
Institution: Radiation protection survey course  
City: Jeddah  
Type of Detector: Ionization Chamber  
Serial number: 1400

Measured quantity: Ambient dose equivalent of  $^{60}\text{Co}$  radiation beam

Calibration method:  
The calibration was performed using KACST's secondary standard ionization chamber type PTW 33022, No. 195, traceable to the primary standard of air kerma at National Office of Metrology (Public Housing). During the calibration of the chamber, collected charge of  $\approx 400 \text{ nC}$ ,  $E(191\text{P})$  300-1000 nC, and  $E(4204\text{K})$  in diameter of calibrated  $^{60}\text{Co}$  beam were applied according to the PTW33022's standard.

Environmental conditions:  
Temperature:  $(22.6 \pm 0.3)^\circ\text{C}$   
Pressure:  $(1010.0 \pm 0.05) \text{ Pa}$   
Relative humidity:  $(29 \pm 1) \%$

Class and date of calibration:  
Atomic Energy Research Institute,  
Laboratory of Calibration, Riyadh,  
08-02-2009

Valid until calibration:  
Temperature:  $25^\circ\text{C}$   
Pressure:  $101.325 \text{ kPa}$   
Relative humidity:  $65 \%$

This certificate may not be reproduced other than in full except with the prior written approval of the issuing laboratory and the customer.



EQUIPMENT CERTIFICATE FROM KACST

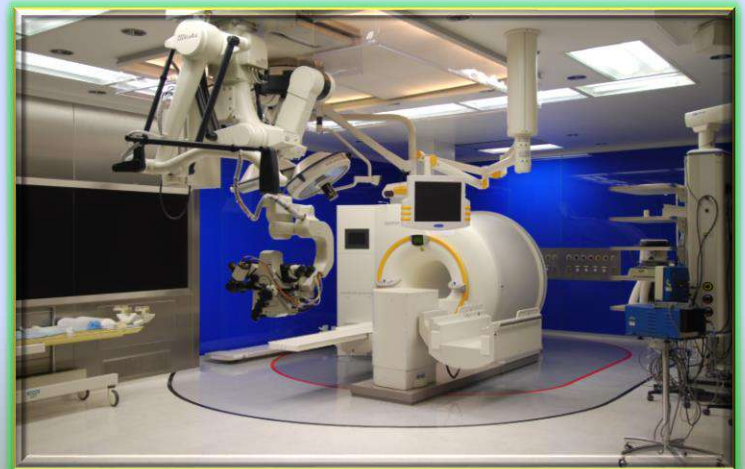


Pressurized  $\mu\text{R}$  Ion Chamber Survey Meter

Beta above 1 MeV, Gamma  
and x-rays above 25 keV



# MRI (MAGNETIC RESONANCE IMAGING) SHIELDING



## MRI/EMF (Copper RF Cage- Shielding)



## MRI/EMF (Galvanized/Aluminium RF Cage)





# MRI

## Uses

- Radio Frequency (RF) shielding for Magnetic Resonance Imaging (MRI) machines
- RF shielding for data/voice security, labs, and test rooms

## Components

- RF Shield Panels:** Modular, rigid panels consisting of 3/4" composition board laminated on two sides with 26 gauge galvanized steel.
- Panel Joining System:** Continuous 1/8" thick galvanized steel hat & flat and corner cove framing shapes, configured to hold RF shield panels rigidly in place.
- Walls:** Consist of modular RF shield panels, with the following additions:
  - Penetration Panel: A standard RF panel will be modified to accept the MRI vendor's supplied penetration panel at the time of magnet delivery. This includes a test plate and grounding buss bar.
  - Magnet Delivery Access Panel: A removable section will be provided in the shield to allow entry or exit of the MRI magnet — location to be specified prior to shield fabrication.
- Floor:** Consists of modular RF panels described above, with the following modifications:
  - Underlayment: Consisting of vapor retardant polyethylene sheet and support material
  - Magnet Supports/Anchors: Installed per Equipment Vendor's specs
  - Wiring Trenches/Raceways: Lined with formed 12-ounce copper and made electrically contiguous with floor panels
  - In certain cases, the MRI equipment vendor requires the use of copper flooring immediately beneath the magnet. The RF panels will be laminated with 12 oz. copper to comply with the MRI equipment vendor specifications.
- Ceiling:** Consists of modular RF panels described above, with the following modifications:
  - Ceiling Supports: Vertical hangers with dielectrics are fastened to overhead structures such as bar joists, concrete slabs, trusses or beams, and are then attached to the RF shield ceiling panels. The dielectric hangers are typically mounted in a four-foot grid pattern and are field installed.
  - Attachment Points: Serve as support of materials to be installed by others, and are of two sub-types: Fully Penetrating or Partially Penetrating

## Optional/Additional Components:

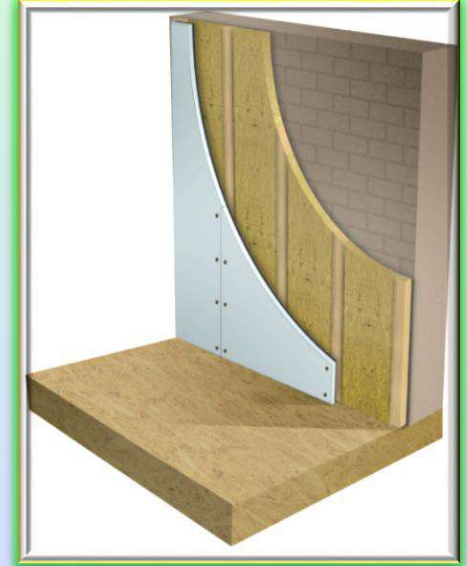
- Magnetic Shielding: M36 Silicone Steel
- Patient-view windows
- Skylights
- Penetration shielding
- EMI rated power line and signal electrical filters
- Magnetic shield calculations and modelling
- Site design
- Backlit panels
- Pneumatic door package
- Acoustic dampening door package
- Interior finish
- Preventive maintenance program



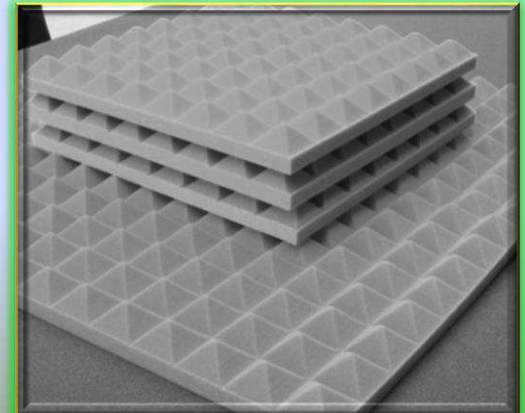


# ACOUSTICAL INSULATION

نظام عزل متكامل للجدران والاسقف والأرضيات والنوافذ بأفضل المواصفات



We offer **Acoustic Insulation Services** to our valuable clients. These are widely used to reduce noise through the walls applied in various industries. These insulation are available in sound absorbent insulation material such as fiberglass, and acoustic boards which is taken care by our strict professionals. Advanced techniques and methods in coordination with all team members are used to render these services.



**GLASS, LEAD GLASS & BULLET RESISTANT**

## LEAD GLASS

Lead Glass available cut to size as large as 48" x 96" Smaller sizes cut to order

Lead equivalencies from 2mm to 3mm

Max. Lead Equivalency

1.8 mm -2.0mm    2.5-2.7 mm    3.0-3.2 mm

### Benefits:

Shields against X-Rays from equipment in the 100 to 300 kV range

High barium and lead content for optimum protection

Neutral appearance

Product of extensive research and development

Marshield quality

### Applications:

Viewing windows and insulating glazing for X-Ray rooms

Screens for medical diagnostics

Protection windows in laboratories

Lenses for safety goggles

Airport security X-Ray glass

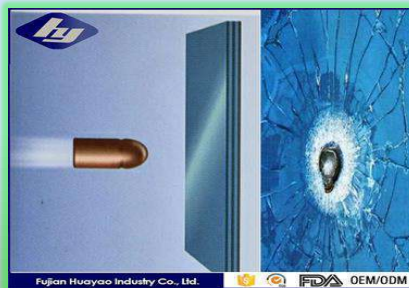




# BULLET RESISTANT GLASS

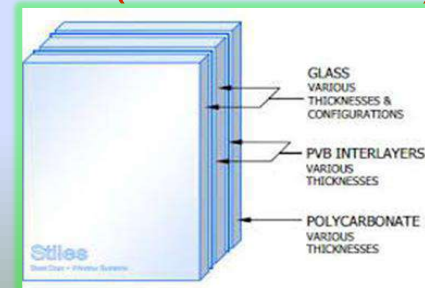


**DKS** is authorized distributor for local and international manufacturers in the field of bullet resistant glass such as Armass Glass®, Saudi American Glass Company Limited, Al Wakeel Glass Factory.

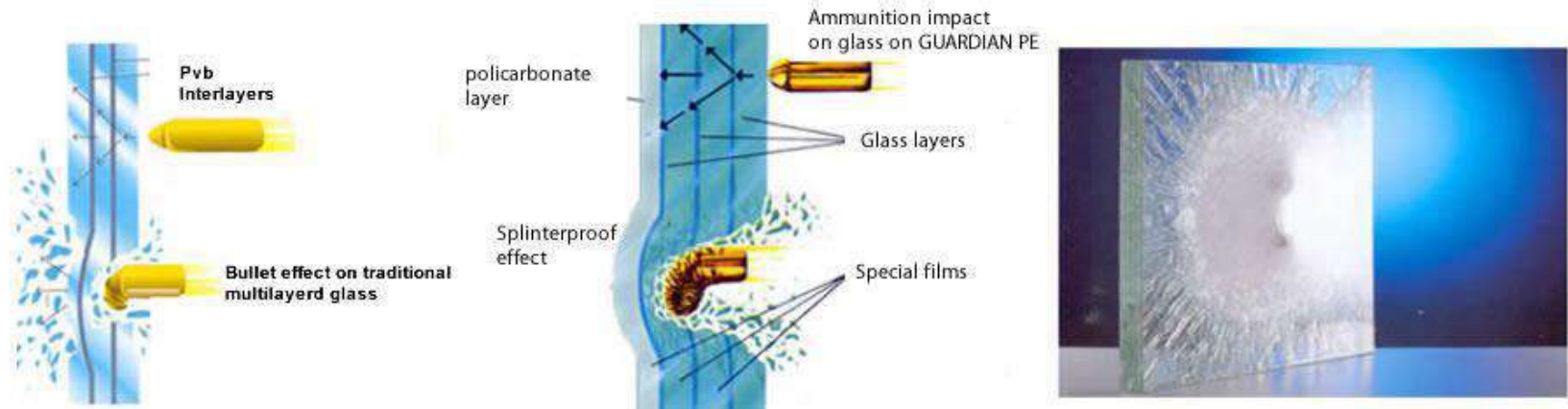


## USAGE AREAS OF LAMINATED (MULTI LAYER GLASS)

- » Banks,
- » Financial Institutions
- » Police
- » Police Stations
- » Consulates
- » Security Huts
- » Shopping Malls



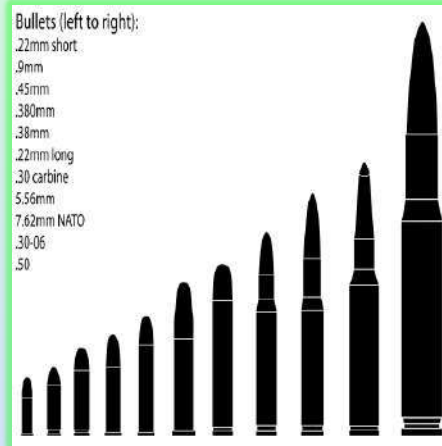
# BULLET RESISTANT GLASS



	Class Threat Level	Type of Weapon	Calibre	Ammunition	No of Shots	Velocity (m/s)	Test Range (m)	Spacing (mm)
	BR1	Rifle	22 LR	LRN	3	360 +/- 10	10	120 +/- 10
	BR2	Hand Gun	9mm Luger	FJ1/RN/SC	3	400 +/- 10	5	120 +/- 10
	BR3	Hand Gun	.357 Magnum	FJ1/CB/SC	3	430 +/- 10	5	120 +/- 10
	BR4	Hand Gun	.44 Rem Magnum	FJ2/FN/SC	3	440 +/- 10	5	120 +/- 10
	BR5	Rifle	5.56x45	FJ2/PB/SCP 1	3	950 +/- 10	10	120 +/- 10
	BR6	Rifle	7.62x51	FJ1/PB/SC	3	830 +/- 10	10	120 +/- 10
	BR7	Rifle	7.62x51	FJ2/PB/HC 1	3	820 +/- 10	10	120 +/- 10
	SG1	Shot Gun	12/70	Solid Slug 3	1	420 +/- 20	10	-
	SG2	Shot Gun	12/70	Solid Slug 3	3	420 +/- 20	10	125 +/- 10

UL 752 Bullet Resistant Materials Standards				
rating	ammunition	weight (in grains)	velocity (min-max feet per second)	# of shots
Level 1	9mm	124	1175-1293	3
Level 2	.357 Magnum	158	1250-1375	3
Level 3	.44 Magnum	240	1350-1485	3
Level 4	.30 caliber rifle (e.g., .30-06 hunting rifle)	180	2540-2794	1
Level 5	7.62mm rifle military ball (e.g., AK-47 assault rifle)	150	2750-3025	1
Level 6	9mm (e.g., uzi submachine gun)	124	1400-1540	5
Level 7	5.56mm rifle military ball (M16 assault rifle)	55	3080-3388	5
Level 8	7.62mm rifle military ball (e.g., AK-47 assault rifle)	150	2750-3025	5

# BULLET RESISTANT GLASS





# BULLET RESISTANT GLASS



**Glass Printing**

طباعة الشعار على الزجاج



**Glass Bending Furnace**

أفران هني الزجاج



**Glass Lamination**

تجميع طبقات الزجاج ومواد الحماية



**Waterjet for Cutting Glass**

مكنان قص الزجاج بضغط المياه  
وترجيت لنقص الزجاج



**Glass Vacuuming & Bagging**

نظام تفريغ الهواء من الزجاج وغلق المسام



**Auto Clave**

وحدات الأوتوكليف لمعالجة الزجاج



**Glass Cutting Machine**

مكنان قص الزجاج

**مكنان صنفرة الزجاج**

**Glass Grinding Section**



**المعالجة بالأشعة البنفسجية**

**U.V.Drying System**



**قسم طباعة الزجاج**

**Glass Printing Section**



**أفران هني الزجاج**

**Glass Bending Furnace**



**وحدات الأوتوكليف  
لمعالجة الزجاج**

**Auto Clave**

## BULLET RESISTANT GLASS



منصة مصفحة لإجراء الاختبارات على مواد التصفيح

Ballistic Material Testing





# PANEL GLASS





**OUR CUSTOMERS**  
**GOVERNMENT and PRIVATE SECTORS**



**ARAMCO**

**MOH**

**PNU**



**MODA**



**NATIONAL  
BOARDER**



**NATIONAL  
GUARD**



**MOHE**



**MOI**



# CERTIFICATES OF COMPLETION



المهندسون المعماريون السعوديون  
SAUDI ARCHITECTS

## شهادة شكر وتقدير

يتقدم مكتب المهندسين السعوديين - الاستشاري المشرف علي إنشاء مستشفى النساء والولادة - بالخروج بخالص الشكر والتقدير

### للمهندس / إبراهيم محمد إبراهيم

وذلك لجهودكم المميزة في المساهمة علي إنجاح وتسليم مشروع مستشفى النساء والولادة بالخارج سعة 200 سرير - وزارة الصحة ، ونود أن نشكر لكم إسهامكم في مجال الغازات الطبية والمتمثلة في التصميم الفني للمشروع والإشراف علي التنفيذ وإجراء الاختبارات اللازمة .

ونتمنى لكم دوام التوفيق

المهندس / حمدي شعان  
مدير المكتب الاستشاري والمشروع



Greggersen-Training in  
Medical Technology



Greggersen Gasetechnik GmbH  
Bodenstraße 27-29  
D - 21031 Hamburg  
- GERMANY -  
Tel: +49 40 / 73 93 57 - 0  
Fax: +49 40 / 73 93 57 - 30



## Certificate

Engr. Ibrahim Mohammed El-Bashier

This is to certify that Engr. Ibrahim Mohammed El-Bashier has completed the Greggersen technical training course conducted in Hamburg, Germany, and as such he is competent to carry out the following:

Supervision, installation, testing and commissioning of medical gas system that complies with the DIN & EN standards.

GREGGERSEN  
GASETECHNIK GmbH  
Bodenstr. 27-29  
D-21031 Hamburg  
Tel: +49 40 73 93 57-0  
email: info@greggersen.de

Hamburg, 16<sup>th</sup> November 2004

Greggersen Gasetechnik GmbH  
Anja Jahn  
- Export Manager -



المهندسون المعماريون السعوديون  
SAUDI ARCHITECTS

## شهادة شكر وتقدير

يتقدم مكتب المهندسين السعوديين - الاستشاري المشرف علي إنشاء مستشفى النساء والولادة - بخميس مشيوط بخالص الشكر والتقدير

### للمهندس / إبراهيم محمد إبراهيم

وذلك لجهودكم المميزة في المساهمة علي إنجاح وتسليم مشروع مستشفى النساء والولادة بخميس مشيوط سعة 200 سرير - وزارة الصحة ، ونود أن نشكر لكم إسهامكم في مجال الغازات الطبية والمتمثلة في الإشراف علي التنفيذ وإجراء الاختبارات اللازمة .

ونتمنى لكم دوام التوفيق

المهندس / حمدي شعان  
مدير المكتب الاستشاري والمشروع



## CERTIFICATES OF COMPLETION



Medical Systems Built on Experience

'Broadway', 50 Chatsworth Road,  
Broad Oak Park, Worsley,  
Manchester, M28 2NT, England.  
Tel: +44 161 794 4207 Fax: +44 161 793 9806  
Web: [www.medi-master.co.uk](http://www.medi-master.co.uk)  
E-Mail: [info@medi-master.co.uk](mailto:info@medi-master.co.uk)

### *Certificate of Competence*

**Engr. Ibrahim Moh'd Ibrahim**

This is to Certify that the above named person has completed the MediMaster International Ltd's training sessions and is certified as competent to carry out the design, supervision, installation and testing of Medical Gas Systems that comply with the UK HTM 2022 Standard.

For MediMaster International Ltd.,

Noel Gaskell (Eng. FIHEEM)  
Managing Director

Date: 14<sup>th</sup> May, 2002



**TO WHOMSOEVER IT MAY CONCERN**

THIS IS TO CERTIFY THAT

**MR. Ibrahim El-Mubashar**  
PASSPORT ID NUMBER C 0539557

IS AUTHORIZED UNDER AI-FAISALIAH MEDICAL SYSTEMS  
TO CARRY OUT THE INSTALLATION OF THE FOLLOWING :

ALL MEDICAL GAS PIPELINE SYSTEMS EQUIPMENT AND COMPONENTS, COMPRISING BUT NOT LIMITED TO:-

- MEDICAL COMPRESSED AIR PLANT
- MANIFOLDS AND MANIFOLD CONTROL SYSTEMS
- AGES EQUIPMENT
- LOK EQUIPMENT
- LINE VALVES AND AREA SERVICE UNITS
- TERMINAL UNITS
- PENDANT SYSTEMS
- OXYGEN AND SUCTION THERAPY EQUIPMENT
- LOCAL ALARM AND INDICATOR UNITS
- PRESSURE SWITCHES
- CENTRAL ALARM SYSTEMS, RELAYS AND REPEATERS

Signed by:   
For and on behalf of  
Penlon Medical Gas Solutions





## CERTIFICATES OF APPROVAL

(For use by the Department of Defense)	(For use by the Department of Defense)	(For use by the Department of Defense)
		
(For use by the Department of Defense) 1. NAME OF THE VESSEL 2. TYPE OF VESSEL 3. HOME PORT 4. DATE OF DEPARTURE 5. DATE OF RETURN 6. NAME OF THE CAPTAIN 7. NAME OF THE FIRST OFFICER 8. NAME OF THE SECOND OFFICER 9. NAME OF THE THIRD OFFICER 10. NAME OF THE FOURTH OFFICER 11. NAME OF THE FIFTH OFFICER 12. NAME OF THE SIXTH OFFICER 13. NAME OF THE SEVENTH OFFICER 14. NAME OF THE EIGHTH OFFICER 15. NAME OF THE NINTH OFFICER 16. NAME OF THE TENTH OFFICER 17. NAME OF THE ELEVENTH OFFICER 18. NAME OF THE TWELFTH OFFICER 19. NAME OF THE THIRTEENTH OFFICER 20. NAME OF THE FOURTEENTH OFFICER 21. NAME OF THE FIFTEENTH OFFICER 22. NAME OF THE SIXTEENTH OFFICER 23. NAME OF THE SEVENTEENTH OFFICER 24. NAME OF THE EIGHTEENTH OFFICER 25. NAME OF THE NINETEENTH OFFICER 26. NAME OF THE TWENTIETH OFFICER 27. NAME OF THE TWENTY-FIRST OFFICER 28. NAME OF THE TWENTY-SECOND OFFICER 29. NAME OF THE TWENTY-THIRD OFFICER 30. NAME OF THE TWENTY-FOURTH OFFICER 31. NAME OF THE TWENTY-FIFTH OFFICER 32. NAME OF THE TWENTY-SIXTH OFFICER 33. NAME OF THE TWENTY-SEVENTH OFFICER 34. NAME OF THE TWENTY-EIGHTH OFFICER 35. NAME OF THE TWENTY-NINTH OFFICER 36. NAME OF THE THIRTIETH OFFICER 37. NAME OF THE THIRTY-FIRST OFFICER 38. NAME OF THE THIRTY-SECOND OFFICER 39. NAME OF THE THIRTY-THIRD OFFICER 40. NAME OF THE THIRTY-FOURTH OFFICER 41. NAME OF THE THIRTY-FIFTH OFFICER 42. NAME OF THE THIRTY-SIXTH OFFICER 43. NAME OF THE THIRTY-SEVENTH OFFICER 44. NAME OF THE THIRTY-EIGHTH OFFICER 45. NAME OF THE THIRTY-NINTH OFFICER 46. NAME OF THE FORTIETH OFFICER 47. NAME OF THE FORTY-FIRST OFFICER 48. NAME OF THE FORTY-SECOND OFFICER 49. NAME OF THE FORTY-THIRD OFFICER 50. NAME OF THE FORTY-FOURTH OFFICER 51. NAME OF THE FORTY-FIFTH OFFICER 52. NAME OF THE FORTY-SIXTH OFFICER 53. NAME OF THE FORTY-SEVENTH OFFICER 54. NAME OF THE FORTY-EIGHTH OFFICER 55. NAME OF THE FORTY-NINTH OFFICER 56. NAME OF THE FIFTIETH OFFICER 57. NAME OF THE FIFTY-FIRST OFFICER 58. NAME OF THE FIFTY-SECOND OFFICER 59. NAME OF THE FIFTY-THIRD OFFICER 60. NAME OF THE FIFTY-FOURTH OFFICER 61. NAME OF THE FIFTY-FIFTH OFFICER 62. NAME OF THE FIFTY-SIXTH OFFICER 63. NAME OF THE FIFTY-SEVENTH OFFICER 64. NAME OF THE FIFTY-EIGHTH OFFICER 65. NAME OF THE FIFTY-NINTH OFFICER 66. NAME OF THE SIXTIETH OFFICER 67. NAME OF THE SIXTY-FIRST OFFICER 68. NAME OF THE SIXTY-SECOND OFFICER 69. NAME OF THE SIXTY-THIRD OFFICER 70. NAME OF THE SIXTY-FOURTH OFFICER 71. NAME OF THE SIXTY-FIFTH OFFICER 72. NAME OF THE SIXTY-SIXTH OFFICER 73. NAME OF THE SIXTY-SEVENTH OFFICER 74. NAME OF THE SIXTY-EIGHTH OFFICER 75. NAME OF THE SIXTY-NINTH OFFICER 76. NAME OF THE SEVENTIETH OFFICER 77. NAME OF THE SEVENTY-FIRST OFFICER 78. NAME OF THE SEVENTY-SECOND OFFICER 79. NAME OF THE SEVENTY-THIRD OFFICER 80. NAME OF THE SEVENTY-FOURTH OFFICER 81. NAME OF THE SEVENTY-FIFTH OFFICER 82. NAME OF THE SEVENTY-SIXTH OFFICER 83. NAME OF THE SEVENTY-SEVENTH OFFICER 84. NAME OF THE SEVENTY-EIGHTH OFFICER 85. NAME OF THE SEVENTY-NINTH OFFICER 86. NAME OF THE EIGHTIETH OFFICER 87. NAME OF THE EIGHTY-FIRST OFFICER 88. NAME OF THE EIGHTY-SECOND OFFICER 89. NAME OF THE EIGHTY-THIRD OFFICER 90. NAME OF THE EIGHTY-FOURTH OFFICER 91. NAME OF THE EIGHTY-FIFTH OFFICER 92. NAME OF THE EIGHTY-SIXTH OFFICER 93. NAME OF THE EIGHTY-SEVENTH OFFICER 94. NAME OF THE EIGHTY-EIGHTH OFFICER 95. NAME OF THE EIGHTY-NINTH OFFICER 96. NAME OF THE NINETYETH OFFICER 97. NAME OF THE NINETY-FIRST OFFICER 98. NAME OF THE NINETY-SECOND OFFICER 99. NAME OF THE NINETY-THIRD OFFICER 100. NAME OF THE NINETY-FOURTH OFFICER 101. NAME OF THE NINETY-FIFTH OFFICER 102. NAME OF THE NINETY-SIXTH OFFICER 103. NAME OF THE NINETY-SEVENTH OFFICER 104. NAME OF THE NINETY-EIGHTH OFFICER 105. NAME OF THE NINETY-NINTH OFFICER 106. NAME OF THE HUNDRETH OFFICER 107. NAME OF THE HUNDRED-FIRST OFFICER 108. NAME OF THE HUNDRED-SECOND OFFICER 109. NAME OF THE HUNDRED-THIRD OFFICER 110. NAME OF THE HUNDRED-FOURTH OFFICER 111. NAME OF THE HUNDRED-FIFTH OFFICER 112. NAME OF THE HUNDRED-SIXTH OFFICER 113. NAME OF THE HUNDRED-SEVENTH OFFICER 114. NAME OF THE HUNDRED-EIGHTH OFFICER 115. NAME OF THE HUNDRED-NINTH OFFICER 116. NAME OF THE ONE HUNDREDTH OFFICER 117. NAME OF THE ONE HUNDRED-FIRST OFFICER 118. NAME OF THE ONE HUNDRED-SECOND OFFICER 119. NAME OF THE ONE HUNDRED-THIRD OFFICER 120. NAME OF THE ONE HUNDRED-FOURTH OFFICER 121. NAME OF THE ONE HUNDRED-FIFTH OFFICER 122. NAME OF THE ONE HUNDRED-SIXTH OFFICER 123. NAME OF THE ONE HUNDRED-SEVENTH OFFICER 124. NAME OF THE ONE HUNDRED-EIGHTH OFFICER 125. NAME OF THE ONE HUNDRED-NINTH OFFICER 126. NAME OF THE TWO HUNDREDTH OFFICER 127. NAME OF THE TWO HUNDRED-FIRST OFFICER 128. NAME OF THE TWO HUNDRED-SECOND OFFICER 129. NAME OF THE TWO HUNDRED-THIRD OFFICER 130. NAME OF THE TWO HUNDRED-FOURTH OFFICER 131. NAME OF THE TWO HUNDRED-FIFTH OFFICER 132. NAME OF THE TWO HUNDRED-SIXTH OFFICER 133. NAME OF THE TWO HUNDRED-SEVENTH OFFICER 134. NAME OF THE TWO HUNDRED-EIGHTH OFFICER 135. NAME OF THE TWO HUNDRED-NINTH OFFICER 136. NAME OF THE THREE HUNDREDTH OFFICER 137. NAME OF THE THREE HUNDRED-FIRST OFFICER 138. NAME OF THE THREE HUNDRED-SECOND OFFICER 139. NAME OF THE THREE HUNDRED-THIRD OFFICER 140. NAME OF THE THREE HUNDRED-FOURTH OFFICER 141. NAME OF THE THREE HUNDRED-FIFTH OFFICER 142. NAME OF THE THREE HUNDRED-SIXTH OFFICER 143. NAME OF THE THREE HUNDRED-SEVENTH OFFICER 144. NAME OF THE THREE HUNDRED-EIGHTH OFFICER 145. NAME OF THE THREE HUNDRED-NINTH OFFICER 146. NAME OF THE FOUR HUNDREDTH OFFICER 147. NAME OF THE FOUR HUNDRED-FIRST OFFICER 148. NAME OF THE FOUR HUNDRED-SECOND OFFICER 149. NAME OF THE FOUR HUNDRED-THIRD OFFICER 150. NAME OF THE FOUR HUNDRED-FOURTH OFFICER 151. NAME OF THE FOUR HUNDRED-FIFTH OFFICER 152. NAME OF THE FOUR HUNDRED-SIXTH OFFICER 153. NAME OF THE FOUR HUNDRED-SEVENTH OFFICER 154. NAME OF THE FOUR HUNDRED-EIGHTH OFFICER 155. NAME OF THE FOUR HUNDRED-NINTH OFFICER 156. NAME OF THE FIVE HUNDREDTH OFFICER 157. NAME OF THE FIVE HUNDRED-FIRST OFFICER 158. NAME OF THE FIVE HUNDRED-SECOND OFFICER 159. NAME OF THE FIVE HUNDRED-THIRD OFFICER 160. NAME OF THE FIVE HUNDRED-FOURTH OFFICER 161. NAME OF THE FIVE HUNDRED-FIFTH OFFICER 162. NAME OF THE FIVE HUNDRED-SIXTH OFFICER 163. NAME OF THE FIVE HUNDRED-SEVENTH OFFICER 164. NAME OF THE FIVE HUNDRED-EIGHTH OFFICER 165. NAME OF THE FIVE HUNDRED-NINTH OFFICER 166. NAME OF THE SIX HUNDREDTH OFFICER 167. NAME OF THE SIX HUNDRED-FIRST OFFICER 168. NAME OF THE SIX HUNDRED-SECOND OFFICER 169. NAME OF THE SIX HUNDRED-THIRD OFFICER 170. NAME OF THE SIX HUNDRED-FOURTH OFFICER 171. NAME OF THE SIX HUNDRED-FIFTH OFFICER 172. NAME OF THE SIX HUNDRED-SIXTH OFFICER 173. NAME OF THE SIX HUNDRED-SEVENTH OFFICER 174. NAME OF THE SIX HUNDRED-EIGHTH OFFICER 175. NAME OF THE SIX HUNDRED-NINTH OFFICER 176. NAME OF THE SEVEN HUNDREDTH OFFICER 177. NAME OF THE SEVEN HUNDRED-FIRST OFFICER 178. NAME OF THE SEVEN HUNDRED-SECOND OFFICER 179. NAME OF THE SEVEN HUNDRED-THIRD OFFICER 180. NAME OF THE SEVEN HUNDRED-FOURTH OFFICER 181. NAME OF THE SEVEN HUNDRED-FIFTH OFFICER 182. NAME OF THE SEVEN HUNDRED-SIXTH OFFICER 183. NAME OF THE SEVEN HUNDRED-SEVENTH OFFICER 184. NAME OF THE SEVEN HUNDRED-EIGHTH OFFICER 185. NAME OF THE SEVEN HUNDRED-NINTH OFFICER 186. NAME OF THE EIGHT HUNDREDTH OFFICER 187. NAME OF THE EIGHT HUNDRED-FIRST OFFICER 188. NAME		

[illegible][illegible]

## CERTIFICATES OF APPROVAL

[illegible]

16/02/2012 10:28

Page 9, 202/192

*Shahid Shafiq & Partners*

**شركة محمد الشفيق وشركاه**

الخدمات والهندسات الهندسية  
For Shafiq & Engineering Consulting

مقر الشركة: طابق الأرض، مبنى رقم 10، شارع 10، حي النور، مدينة الرياض، المملكة العربية السعودية

رقم الترخيص: ١٢٤٢٧  
البريد الإلكتروني: info@sscp.com.sa  
الهاتف: ٩٢٢١١٠٠  
الفاكس: ٩٢٢١١٠٠

المعلم

الخدمات والهندسات الهندسية

الخدمات الهندسية

إدارة مشاريع

إدارة مشروع إنشاء كلفة المصنع مع تقنيات المصنعية بمطابقة المواصفات الإسلامية وإسرافاً واستمرارية  
التحكم بموافقة الوزارة على اعتماد شركة ( INTERPIPE ) الكورانية لتوريد الفولاذ الجيد الأود أثير  
معلوم لتأمين إقرار نقل الفولاذ وتأمين كافة الخدمات المطلوبة للمشروع المذكور أعلاه ، وعلى أن يتم  
تقديم وثائق الإحداثيات في التوريد و تأمين خدمات النقل والدمج ، وإلا يتم بما جاء من فرصيات بطلب  
الوزارة رقم ٢٢٢٧٢ وتاريخ ٢٠١٥/٠٣/١٤هـ .  
وهذا لإتمام العمل وتكملة جميع احتياجاته ... والسلام عليكم ورحمة الله وبركاته

المعلم محمد الشفيق  
المعلم الشفيق

**شركة محمد الشفيق وشركاه**

الخدمات والهندسات الهندسية

تخصص رقم ١٢٤٢٧ / ١٢

معلم  
محمد الشفيق  
محمد الشفيق

رقم الترخيص: ١٢٤٢٧  
P.O. Box : 25109 Riyadh 11460 - Tel: 9221110 Fax: 9221100 E-mail: info@sscp.com.sa

[illegible]

## CERTIFICATES OF APPROVAL

[illegible][illegible]

رقم البنية : ١٢		شروع کلیة التصميم و الاقتصاد الفيزيائي	
المقابل			
الهيئة العامة للغذاء والدواء Ministry of Health - General Directorate of Food & Drug Administration		الرابعة إبستراتات و خدمات طبية <b>Alrabiah</b> Consulting & Engineering Services	
تلفن : ٦٦٨٥٥٠ فاكس : ٦٦٨٥٥٠		وزارة التعليم العالي (جامعة الخليل)	
REQUEST FOR PREVIEW WORK IN PROGRESS		معاینة اعمال تحت التفتيش	
Work Type : مشاکی	Date : التاريخ : ١٤٣٣ / ١ / ١١ هـ	Approval Date : ٧	رقم التفتیش :
Work Location :	موقع العمل :	Approval Time : اثنی مره	نوع التفتیش :
تعليقات المهندس :		وصف الأعمال الحالي تنفيذها و المطلوب معاينة :	
تعليقات العميل :		استلام خطة شبكة الغاز الطبي (الكث متصل)	
Comments Contractor :		ملاحظات الاستشاري :	
Inspected with attached driving gas leakage test had 24 hrs with 10 Bar and found correct NO leakage.			
Note In future any damage medical gas pipe contractor repaired extra his cost.			
INSPECTION RESULTS			
Status	نتیجة التفتیش و المعاينة		
<input checked="" type="checkbox"/> Approved	<input type="checkbox"/> العمل مطابق و لا يلزم من إعادة العمل		
<input type="checkbox"/> Approved as Noted	<input type="checkbox"/> العمل مطابق - لا يلزم من متابعة العمل بعد تدارك الملاحظات		
<input type="checkbox"/> Hold for Re-inspection	<input type="checkbox"/> العمل مطابق - بعد التقيد بعد تدارك الملاحظات		
<input type="checkbox"/> Not Approved	<input type="checkbox"/> العمل غير مقبول و يحتاج		
CONTRACTOR	المقاول	CONSULTANT	الاستشاري
اسم : نور سمیر قتی	اسم : محمد میخائیل	اسم : Bushra	اسم : Bushra
التوقيع : محمد میخائیل	التوقيع : محمد میخائیل	الوظيفة : Engineer	الوظيفة : Engineer
التاريخ : ١٤٣٣ / ١ / ١١ هـ	التاريخ : ١٤٣٣ / ١ / ١١ هـ	التاريخ : ١٤٣٣ / ١ / ١١ هـ	التاريخ : ١٤٣٣ / ١ / ١١ هـ
Confirmed by Client		امضاء العميل	
Engineering Department at the University of Tell		وزارة تعليم العالي (الجامعة الإسلامية) جامعة الخليل	
الخبر		الأستاذ	



# CERTIFICATES OF APPROVAL

UNIVERSITY OF TAIF

MINISTRY OF HIGHER EDUCATION

AL-FACULTY OF ENGINEERING, INDUSTRIES AND CONTRACTING

20-03-12 23:59 Pg. 3

**SUBMITTAL FORM**

SOCIETY COLLOID (ET) - INVESTIGATION OF COMPLEX - CHOLERA  
LPS COMPREHENSIVE AIR VACUUM AIR MATERIALS SAMPLES

Form Code & Ref: 15/2

S.O.S. Control: (FROM 15-1) (TO 15-3-4)

Drawing No.:

Submission No. (30)

Submission Date: 15/03/12

Submission Title:

Sub-Contractor Name:

Address:

Phone:

Task:

Information submitted and checked:

Technical drawings: ☐ Approved

Manufacturing process & quality: ☐ Approved

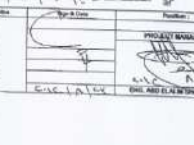
Shop drawings: ☐ Approved

Other: ☐ Approved

Contractor's Comments:

Remarks:

Approved: ☐ Not Approved: ☐ Hold for Re-inspection: ☐ Not Approved: ☐

Signature: 

PROJ. MANAGER

DATE: 15/03/12

UNIVERSITY OF TAIF

MINISTRY OF HIGHER EDUCATION

AL-FACULTY OF ENGINEERING, INDUSTRIES AND CONTRACTING

20-03-12 23:59 Pg. 3

**REQUEST FOR PREVIEW WORK IN PROGRESS**

SOCIETY COLLOID (ET) - INVESTIGATION OF COMPLEX - CHOLERA  
LPS COMPREHENSIVE AIR VACUUM AIR MATERIALS SAMPLES

Form Code & Ref: 15/2

S.O.S. Control: (FROM 15-1) (TO 15-3-4)

Drawing No.:

Submission No. (30)

Submission Date: 15/03/12

Submission Title:

Sub-Contractor Name:

Address:

Phone:

Task:

Information submitted and checked:

Technical drawings: ☐ Approved

Manufacturing process & quality: ☐ Approved

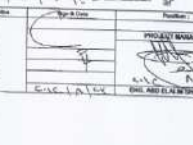
Shop drawings: ☐ Approved

Other: ☐ Approved

Contractor's Comments:

Remarks:

Approved: ☐ Not Approved: ☐ Hold for Re-inspection: ☐ Not Approved: ☐

Signature: 

PROJ. MANAGER

DATE: 15/03/12

UNIVERSITY OF TAIF

MINISTRY OF HIGHER EDUCATION

AL-FACULTY OF ENGINEERING, INDUSTRIES AND CONTRACTING

20-03-12 23:59 Pg. 3

**REQUEST FOR PREVIEW WORK IN PROGRESS**

SOCIETY COLLOID (ET) - INVESTIGATION OF COMPLEX - CHOLERA  
LPS COMPREHENSIVE AIR VACUUM AIR MATERIALS SAMPLES

Form Code & Ref: 15/2

S.O.S. Control: (FROM 15-1) (TO 15-3-4)

Drawing No.:

Submission No. (30)

Submission Date: 15/03/12

Submission Title:

Sub-Contractor Name:

Address:

Phone:

Task:

Information submitted and checked:

Technical drawings: ☐ Approved

Manufacturing process & quality: ☐ Approved

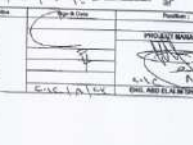
Shop drawings: ☐ Approved

Other: ☐ Approved

Contractor's Comments:

Remarks:

Approved: ☐ Not Approved: ☐ Hold for Re-inspection: ☐ Not Approved: ☐

Signature: 

PROJ. MANAGER

DATE: 15/03/12

# CERTIFICATES OF TECHNICIANS

**AL HOTY-STANGER LTD. CO.**  
Independent Laboratories & Materials Testing

شركة الحوتي ستانجر المحدودة  
مختبرات وفحص المواد المستقلة

## QB 483 PROCEDURE QUALIFICATION RECORDS (PQR) Record of Actual Conditions Used to Braze Test Coupon

Report Ref. No.: RD-M-01277

Company Name	SALEH MAQBEL AL QURAFI EST.	Date	19 March 2015
PQR No.	SMQ-PQR-001		
DPS No.	SMQ-DPS-001 Rev.001		
Brazing Process (s)	Forced Brazing (OXY-ACETYLENE)	Type (s)	Manual

<b>JOINTS (QB-408)</b>		<b>JOINT DESIGN OF TEST COUPON</b>	
Type of Joint	SOCKET JOINT		
Joint Clearance	0.05 - 0.015 mm		
Length of Overlap	29.0mm (Half Length of Socket)		
Others	N/A		

<b>BASE METALS (QB-402)</b>		<b>FLOW POSITION (QB-407)</b>	
P. No.	107	to P. No.	107
Material Specification	ASTM B 819 (C 12000)	Flow Position (s)	Vertical Up-Flow "C" & Horizontal Flow "D"
Type or Grade	OXY-MED	Method of Applying Filler Metal	Flux Feeding
Thickness of Test Coupon	1.20mm	Others	N/A
Method of Pre-cleaning	Wiping with Emery Cloth		
Others	Diameter = 42.00mm OD		

<b>FILLER METALS (QB-403)</b>		<b>POST BRAZE HEAT TREATMENT (QB-409)</b>	
F. No.	001	Others	N/A
ASME Spec.	AS.8	Others	N/A
AWS Class No.	BacP-3	Others	N/A
Size (or Shape) of Filler Metal	1.5mm X 3.2mm (RECTANGULAR)	Type and Temperature of Aging or Stabilizing Thermal Treatment	
Others	Filler Wire Brand: LENOX	After Brazeing	N/A
Heat Number	121872		

<b>BRAZING TEMPERATURE (QB-410)</b>		<b>TECHNIQUE (QB-410)</b>	
Temp. Range	615°C - 815°C	Method of Post Brazing Cleaning	Wire Brushing & Wiping with Emery Cloth
Others	N/A	Type of Flame	Oxy-Acetylene
		Torch Tip Size	3-5
		Other	Purging Gas - Pure Nitrogen 99.99%

<b>BRAZING FLUX OR ATMOSPHERE (QB-406)</b>		Test Witnessed by: JOBY JOSE	
Flux or Trade or Composition	N/A	Date Witnessed by:	March 11, 2015
Atmosphere for Furnace Brazing	N/A		

Rev 2/ 01 January, 2001  
Appendix 4B - Page 1 of 2

**AL HOTY-STANGER LTD. CO.**  
Independent Laboratories & Materials Testing

شركة الحوتي ستانجر المحدودة  
مختبرات وفحص المواد المستقلة

<input checked="" type="checkbox"/> Full		QB-483		<input type="checkbox"/> Reduced Section	
BPS 4: SMQ-DPS-001, REV.00		TENSILE TEST (QB-150)			
PQR: SMQ-PQR-001					

Specimen No.	Dimensions (mm)			Area (mm <sup>2</sup> )	Ultimate Total Load (KN)	Ultimate Stress (MPa)	Character of Failure and Location
	T.D. (mm)	Thickness (mm)	O.D. (mm)				
VERTICAL UP-FLOW "C"	T-1	40.19	-	41.94	112.88	27.85	BASE METAL
	T-2	40.09	-	41.96	120.51	28.25	BASE METAL
HORIZONTAL FLOW "D"	T-1	39.98	-	41.86	120.84	27.30	BASE METAL
	T-2	40.25	-	42.08	118.53	28.40	BASE METAL

GUIDED BEND TEST (QB-160) (N/A)

Type and Figure No.	Results

PEEL OR SECTIONING TEST (QB-170 or QB-180)

Type and Figure No.	Results
VERTICAL UP-FLOW "C"	SPECIMEN-1 SATISFACTORY
	SPECIMEN-2 SATISFACTORY
HORIZONTAL FLOW "D"	SPECIMEN-1 SATISFACTORY
	SPECIMEN-2 SATISFACTORY

OTHER TESTS

Type of Tests: N/A  
Other: N/A

Brazer's Name: RONE SIASTRES BLANCO Clock No. Stamp No. BS# 001

Test Conducted by: AL-HOTY STANGER LTD. CO. Laboratory Test No. RD-M-01277

We certify that the statements made in this record are correct and that the test brazes were prepared, brazed, and tested in accordance with the requirements of Section IX Edition of the ASME Code.





Dated: 17 March 2015  
By: Mr. ADAM MUSA

Manufacturer: SALEH MAQBEL AL QURAFI

(Details of record of tests are illustrative only and may be modified to conform to the type and number of tests required by the Code.)

G1:RC53

# CERTIFICATES OF TECHNICIANS

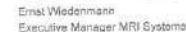
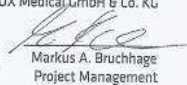
<b>AL HOTY - STANGER</b>		<b>BRAZER / BRAZING OPERATOR</b>		Report No: RD-M-01317	
		<b>QUALIFICATION TEST RECORD</b>			
		<b>SALEH MAQBEL AL QURAFI EST.</b>		March 29, 2015	
Name : <b>MAHMOUD BOSHRA AHMED ABDELLA</b>		Identification No. : <b>BR # 004</b>			
Issued / Passport No. : <b>2345447735</b>		Joint Type : <b>Socket</b>			
Identification of BPS Followed : <b>SMQ-BPS-001/Rev.0</b>		Brazing Type : <b>TORCH BARZING</b>			
Supporting BPS(Q/s) : <b>SMQ-PQR-001</b>		Thickness : <b>1.20 mm</b>			
Specification of Base Metal(s) : <b>ASTM-B 819</b>		Type / Grade : <b>OXYMED</b>			
<b>Testing Variables and Qualification Limits</b>					
<b>Brazing Variables ( QB 350 )</b>		<b>Actual Values</b>		<b>Range Qualified</b>	
Brazing Process(es)		Torch Brazing		Torch Brazing	
Type (s) Manual, Semi-auto, Auto) used		MANUAL		MANUAL	
Base metal P-Number to P-Number		10T		10T	
Base metal Thickness to Base metal Thickness		1.20 mm		0.60-2.40 mm	
Joint Type (Butt, Lap, Scarf, Socket, etc.)		Socket		Socket	
If Lap or Socket, Overlap Length		above 12 length of socket		above 12 length of socket	
Joint Clearance		0.06-0.15 mm		0.06-0.15 mm	
Filler metal specification(s) (SFA)		A 5.8		A 5.8	
Filler metal classification		Bco P-3		Bco P-3	
Filler metal P-Number(s)		103		103	
Filler metal Product Form		LENOK-3.2 X 1.3 mm		LENOK-3.2 X 1.3 mm	
Brazing Flow Positions		Vert. Up & Hoz. (C & D)		ALL	
Brazing Temperature		845°C-845° C		845°C-845° C	
Purging		Pure Nitrogen 99.99 %		Pure Nitrogen 99.99 %	
Brazing Tip Size		# 5		# 5	
Filler metal(s) not covered by AWS		N/A		N/A	
<b>RESULTS</b>					
<b>Test Conducted</b>		<b>Test Details (Type, Report No. etc.)</b>		<b>Results</b>	
Visual examination		[ X ]		SATISFACTORY	
Tensile Test		[ ]		N/A	
Peel Test		[ X ]		RD-M-01317	
Transverse Bend		[ ]		N/A	
Longitudinal Bends		[ ]		N/A	
Other tests		[ ]		N/A	
Test witnessed by : <b>JOBY JOSE (AHS-05)</b>					
We, the undersigned, certify that the statements in this record are correct and that the coupons were prepared, brazed, and tested in accordance with the requirements of <b>ASME IX</b> Braze code, 2013 Edition.					
For <b>AL HOTY STANGER LTD. Co.</b>					
Brazing Supervisor : 		Contractor : <b>SALEH MAQBEL AL QURAFI EST.</b>			
Inspection / Regional Manager : 		Contractor Rep : <b>M. ADAM MUSA</b>			
This report relates only to the sample tested and shall only be reproduced in full with a written approval of AWS, testing laboratory.					



## CERTIFICATES OF COMPLETION IN RADIATION PROTECTION



# CERTIFICATE



## CERTIFICATE

## CERTIFICATES OF COMPLETION

**مجموعة الجبال العربي**  
Al Majal Al Arabi Group

رقم: ٢٠١٠ / ١ / ٢٤  
التاريخ: ١٠ / ١ / ٢٠١٠  
قطاع المقاولات  
Contracting Division

إدارة العقود

السادة / إلى من يهجه الأمر

**شهادة إنجاز أعمال**

تشهد مجموعة الجبال العربي قطاع المقاولات بأن / مؤسسة دار الكون السعودي قد قامت بأعمال توريد وتركيب نظام الحماية من الأشعة لروم غرف الأختة في مشروع إنشاء العيادات الخارجية بمستشفى السليل.

وقد قامت المؤسسة بأعمالها طبقاً للمواصفات المطلوبة وتم الانتهاء في الوقت المحدد وقد أمدتنا بكافة الخدمات المطلوبة للأعمال والمساعدات الفنية والتقنية.

وقد أعطيت للمؤسسة هذه الشهادة لتقديمها كن بعمه الأمر دون أي مسؤولية على المجموعة مع خالص الشكر

مدير عام قطاع المقاولات  
٢٠١٠  
مهندس / هاني بن محمد القرني

مجموعة الجبال العربي  
قطاع المقاولات  
Contracting Division  
E.M. 1010151889

من: ب الرياض ١١٦٦٢ المملكة العربية السعودية - هاتف: ٢٠١٥٢٧٠ - فاكس: ٢٠١٥٢٧٨ - ب ١٠١٠١٥١٨٨٩ - رقم المسبقة ٩٢٥٤  
P.O. Box 92833 Riyadh 11663 Kingdom of Saudi Arabia - Tel: 2015170 - Fax: 2015168 - C.I.: 1010151889 - C.C.: 86258

**مجموعة سدر**  
SEDER GROUP

الرقم: ٢٠١٠ / ١ / ٢٤٣  
التاريخ: ٢٠١٠ / ١ / ٢٤  
الموافق: ١٤٣١ / ١ / ٢٤ هـ

**" شهادة إنجاز "**

تشهد شركة مجموعة سدر للتجارة والمقاولات بأن السادة مؤسسة دار الكون السعودي قد أنجزت أعمال الالكتروميكانك والصيانة المتمثلة في توريد وتركيب نظام تبخير الأوكسجين السائل بمجمع الرياض الملك سعود الطبي بالرياض بموجب التعاقد رقم ٢٠١٠ / ١ / ٢٤٣.

وعليه فإننا نشكرهم على سرعة الإنجاز ودقة العمل وحسن الأداء والتعاون وبناء عليه أعطية لهم هذه الشهادة.

والله ولي التوفيق

مدير الشؤون الفنية بالمجموعة

المهندس / مبارك بن مدخل الصاعدي

مجموعة سدر  
Seder Group

من: ب الرياض ١١٤٩٢ - المملكة العربية السعودية - هاتف: ٤٦٠٦٦٦٦ - فاكس: ٤٦٠٦٦٦٨  
P.O.Box 8896, Riyadh 11492, Saudi Arabia. Tel: 460 6660 - Fax: 460 7568

**مجموعة سدر**  
SEDER GROUP

الرقم: ٢٠١٠ / ١ / ٢٤٣  
التاريخ: ٢٠١٠ / ١ / ٢٤  
الموافق: ١٤٣١ / ١ / ٢٤ هـ

**" شهادة إنجاز "**

تشهد شركة مجموعة سدر للتجارة والمقاولات بأن السادة مؤسسة دار الكون السعودي قد أنجزت أعمال صيانة شبكة الغازات الطبية في موقع مجمع الملك سعود الطبي بالرياض بموجب أمر العمل رقم (٤٥٥٨٧) وتاريخ ١٤٢٩ / ١ / ٢٤ هـ.

وعليه فإننا نشكرهم على سرعة الإنجاز ودقة العمل وحسن الأداء والتعاون وبناء عليه أعطية لهم هذه الشهادة.

والله ولي التوفيق

مدير الشؤون الفنية بالمجموعة

المهندس / مبارك بن مدخل الصاعدي

مجموعة سدر  
Seder Group

من: ب الرياض ١١٤٩٢ - المملكة العربية السعودية - هاتف: ٤٦٠٦٦٦٦ - فاكس: ٤٦٠٦٦٦٨  
P.O.Box 8896, Riyadh 11492, Saudi Arabia. Tel: 460 6660 - Fax: 460 7568



## CERTIFICATES OF COMPLETION

الرقم :  
التاريخ :  
المستلم :  
الموضوع :  
Date : 03/05/09

وزارة الصحة  
مستشفى الملك عبد الله  
في محافظة بيشة  
إدارة الخدمات العامة والمساندة

To : Mr. Mohammed Haider Najar  
Bio-medical Engineer

From : Eng'r Abdulaziz Al Mathan  
Support Services Director

Subj : Appreciation letter.

With great pleasure, I am very glad to issue an appreciation letter as you did the pre-installation room work of Digital Mammography Unit in our Radiology dept. of King Abdullah Hospital to the satisfaction of management with your excellent skills and knowledge in all aspects of unit. We are very thankful to the D.K.S. Co. for providing us the quality of service.

Hence, once again I appreciate your valuable services which you have been discharged as per the requirement of unit.

With best regards,

Eng'r Abdulaziz Al Mathan  
Support Services Director

بيشة، ص.ب ٦٠ ، ت: ٠٧١٢٢٣٣٣٣ - تحويلة: ١١٠٩ - ١١٥٧ - فاكس : ٠٧١٢٢٤١٤٩



الرقم : ٦٢٠١٠/٢٥٤  
التاريخ : ٢٠١٠/٠٥/٢٤  
الموافق : ١٤٣١/٠٥/٢٤

### " شهادة إنجاز "

تشهد شركة مجموعة سدر للتجارة والمقاولات بأن السادة مؤسسة دار الكون السعودي قد أنجزت أعمال التركيب والصيانة المتمثلة في توريد وتركيب شبكة توزيع الأوكسجين بمجمع الرياض الملك سعود الطبي بالرياض بموجب التعاقد رقم ٦/٢٥٤/٢٠١٠.

وعليه فإننا نشكرهم على سرعة الإنجاز ودقة العمل وحسن الأداء والتعاون وبناء عليه أعطيناهم هذه الشهادة.

والله ولي التوفيق.....

مدير الشؤون الفنية بالمجموعة

المهندس / مبارك بن مدخل الصاعدي



عرب سات ٨٨٩١ - الرياض ١١٤٤٩ - المملكة العربية السعودية. الفون: ٤٦٠٩٦٦٦ - فاكس: ٤٦٠٧٥٨٨  
P.O.Box 8891, Riyadh-11492, Saudi Arabia, Tel.: 460 9666, Fax: 460 7588



التاريخ : ١٤٣١/٠٧/٢٠ هـ  
الموافق : ٢٠١٠/٠٧/١٤ م  
الرقم : ATC 188/06/10

### شهادة حسن إنجاز

تشهد شركة العرب للتجارة المحدودة بأن السادة / مؤسسة دار الكون السعودي إحدى المؤسسات الطبية المشاركة في تجهيز المراكز الصحية التابعة للامم وزارة الصحة لعدد ٣٧٧ مركز صحي على مستوى المملكة .  
وقد أنجزت أعمال التوريد وتركيب بدالة وحسن أداء حسب العقد المبرم بيننا .

والله ولي التوفيق،،،

شركة العرب للتجارة المحدودة

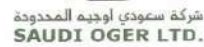
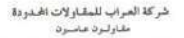


عرب سات ٨٨٩١ - الرياض ١١٤٤٩ - المملكة العربية السعودية - رقم الترخيص : ١٤٣١١  
P.O.Box 8891 Riyadh-11492 - Tel: 4609666 - Fax: 4607588 - Al Arab Trading Co. Ltd. - GC No. 178910  
www.arabtrading.com - E-mail : info@arabtrading.com

مقر الشركة: شارع محمد علي، حي الميناء، القاهرة - مصر 11511 - تليفون: 0111-76981111 - فاكس: 0111-76981111  
www.saoudigroup.com | 0111-76981111 | 0111-76981111

LIMITED LIABILITY COMPANY CAPITAL 750 SHARE A.E. © V.V. 2010 CHAIRMAN OF BOARD MR. SAUD AL-SABER CEO SAUD MOHAMMED AL-SABER  
TEL: +966-11-76981111 FAX: +966-11-76981111 WWW.SAUDIGROUP.COM

## CERTIFICATES OF COMPLETION

[illegible][illegible]

© 2015 by Saudi Electronic Journal of Environmental and Developmental Studies. All rights reserved.  
C.R. 1010102417 - P.O. Box 91513 Riyadh 11653 - Tel.: 25544026 / 25144031 - Fax: 25144034 - Kingdom of Saudi Arabia - C.O. No. 80085  
Email: esajournal@sciedu.com





## CERTIFICATES OF COMPLETION

AlbatrossProjects

### Certificate of Training

Herewith we confirm that

**Moh'd H. Al-Najjar**  
General Manager of DAR ALKAWIN AL-SAUDI (DKS)

Successfully took part in training at Albatross Projects GmbH

Mr. Najjar took part in training between 2008-11-17 until 2008-11-18. Within this time he got knowledge and practical experience about the following tasks:

- Principles of Magnet Resonance Imaging (MRI) and their practical usage
- How to use RF shielding
- Usage of electrical RF filters
- Planning of shielded rooms in the health care sector
- Installation of MRI shielded rooms
- Inner lining of MRI rooms: materials and installation
- Inner lining of MRI operation rooms: materials and installation

Mr. Najjar was eager for knowledge. He showed readiness of mind and never stopped learning during the training.

Albatross Projects GmbH  
Bernhard Weikert  
Senior Project Manager MRI Systems

Ernst Wiedenmann  
Executive Manager MRI Systems

CERTIFICATE

INTEGRATED MEDICINE  
HOSPITAL

### شهادة إنجاز

تشهد إدارة مستشفى الطب المتكامل بمدينة الفرج ، المملكة العربية السعودية بأن السادة مؤسسة دار الكون السعودي قد قامت بتجهيز المستشفى (٦٥ سرير) و يشمل التجهيز الطبي بجميع أنسائه وشبكة الغازات الطبية و حيث ان المؤسسة نفذت ما عليها من مهام تشمل التوريد والتركيب والضمان بكل دقة وحسن أداء فإننا نمنحهم هذه الشهادة ونقدر لهم تعاونهم المستمر...

والله ولي التوفيق...

مدير التشغيل

101020801 - P.O. Box 227 Riyadh 11411 - Tel.: 4056408 Fax: 5490508

Kingdom of Saudi Arabia  
Ministry of Health  
King Fahad Medical City

المملكة العربية السعودية  
وزارة الصحة  
مدينة الملك فهد الطبية

### شهادة إنجاز لأمر شراء مصدر إضاءة فوق بنفسجية للمعمل

تشهد إدارة الصيانة والمشاريع بمدينة الملك فهد الطبية بأن مؤسسة دار الكون السعودي قد قامت بتأمين البند الموضحة في أمر الشراء رقم (FALMUTAHH30/24003) المرفق بتاريخ ٢٠٠٩/١٢/٢٦ بتأمين مصدر إضاءة فوق البنفسجية للمعمل ولا مانع لدينا من صرف مستحقاتها المالية عن هذا البند والبالغ (١١٢٠٠) ريال.

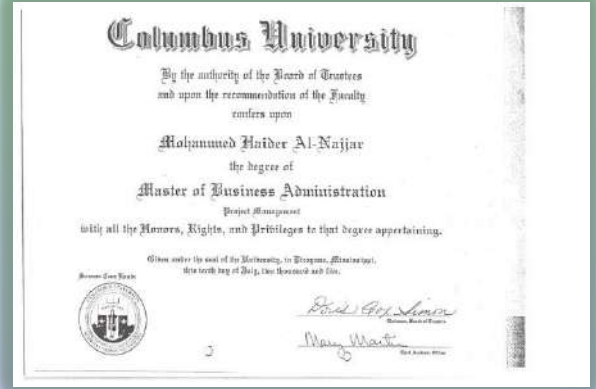
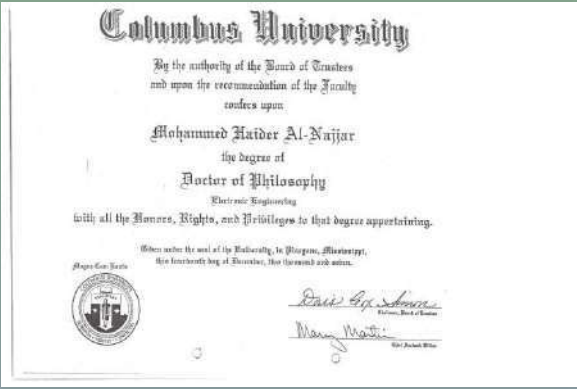
رئيس قسم المشاريع  
م. عبدالله بن محمد الخانم

مدير المشروع  
Eng. Ver

مدير إدارة المشاريع والصيانة بالإتابة  
م. عائش بن عوض الفطاسي

التوقيع :  
التاريخ :

## EDUCATIONAL CERTIFICATES





## EDUCATIONAL CERTIFICATES



## CERTIFICATES OF COMPLETION

### CERTIFICATE

This certificate was presented to  
Mr. Mohammed Haider Al Najjar  
 on successful completion of a  
 Technical Training Course  
 on the design, construction  
 and servicing of  
Specialist Hospital and Laboratory  
Cleaners and Disinfectors

*Andreas Miele*

Miele & Cie. Gütersloh, den 27. März 1992

**Miele**



### CERTIFICATE

**Moh'd H. Al-Najjar**  
 from FARABI CORP.

has participated in a Hermle product and service course during March 30/31, 1992.

The training covered the use and maintenance of the "HERMLE" centrifuge range.

The participant has obtained a deep knowledge and understanding.  
 He has demonstrated the required technical proficiency to provide service on  
 all "HERMLE" centrifuges.

April 03, 1992  
 Date

*S. Gm*  
 Service Manager

Maschinenfabrik  
 Berthold Hermle AG  
 D-7209 Gosheim

### Diploma

THIS IS TO CERTIFY THAT

*Mr. Mohd. H. Al-Najjar*

HAS SUCCESSFULLY COMPLETED  
 USER/OPERATING TRAINING  
 FOR

anthos Reader 2001  
 anthos Reader 2010  
 anthos HTII/III  
 anthos Lucy1  
 anthos aw1

anthos labtec  
 Instrumente für Labordiagnostik  
 J. Gm. & Co. KG  
 A-5020 Salzburg, Austria  
 Tel. 0662/87451-1  
 Fax 0662/87451-14

ANTHOS LABTEC INSTRUMENTS GESMBH  
 JAKOB-HARINGER-STRASSE 8  
 A-5020 SALZBURG / AUSTRIA

NOVEMBER 1997

## CERTIFICATES OF COMPLETION

**ALLEN**  
SURGICAL CO. (PVT) LTD.  
Manufacturers & Exporters of  
Quality Surgical, Dental, Veterinary  
Instruments & Supplies of All Sizes

Office : H-5A, G.I.T., P.O. Box 197,  
New Delhi - 110 068 India.  
Phone : +91 - 11 - 2610 1541, 2610 1574  
Fax : +91 - 11 - 2610 1575, 2610 1577  
E-Mail : allen@allensurgical.co.in  
Web : www.allensurgical.com

**TO WHOM IT MAY CONCERN**

IT IS HEREBY AUTHORIZED UNDER THIS LETTER THAT MR. MOHD H. AL-  
NAJJAR HAS RECEIVED 2 WEEKS TRAINING ON MANUFACTURING  
TECHNIQUES OF OPERATIVE LINE OF STAINLESS STEEL SURGICAL  
INSTRUMENTS, ITS INSPECTION METHODS, QUALITY CONTROL  
MEASUREMENTS OF SURGICAL INSTRUMENTS AND ITS PROTECTION FROM  
DETERIORATION, MALFUNCTION AND CORROSION.

DURING TRAINING, HIS INTENTION AND BEHAVIOR WAS GOOD AND HE  
WAS VERY KEEN INTERESTED IN KNOWING THE DETAILS OF SURGICAL  
AND DENTAL INSTRUMENTS.

WE WISH HIM SUCCESS IN EVERY FIELD OF LIFE.

MOHD. H. AL-NAJJAR  
GENERAL MANAGER

MARCH 18, 2004  
Dr. Ramesh Chandra, Pakistan  
Rajouri Baghelwala, INDIA-150023  
Import Register No. AN-10010101  
Sales Tax No. 15/SK/999-200-AJ  
PIN - 150010-5

CE  
REGISTERED  
CERTIFICATE  
FOR EXPORT  
DATE: 18-03-2004

Issued on T.E.D's authorization @ number Import Licence No. 2004



## CERTIFICATES OF COMPLETION



# DKS

شركة دار الكون السعودي

DAR AL KAWN AL SAUDI

نبذة عن المؤسسة

قسم الإنشاءات والحقوق

قسم أعمال الالكتروميكانيك (الغازات الطبية والصناعية)

قسم الأعمال الخشبية والمعدنية

قسم ثلاجات التبريد

قسم الديكور والتصميم الداخلي

قسم التوريدات الطبية والصيانة

غرف العمليات

قسم الحماية من الإشعاع

قسم الزجاج المقاوم للرصاص الحي والأشعة السينية